

The background is an abstract 3D geometric composition of parallel, receding rectangular blocks in shades of blue and purple. A single red cube is positioned on top of one of the blocks in the middle ground.

FORGING
REGIONAL
EXCELLENCE

WHO WE ARE

A globally recognised engineering, property and infrastructure conglomerate renowned for innovative solutions and steadfast commitment to sustainable development.

OUR STORY

Our journey, which spans nearly five decades, is marked by innovation, resilience, and a commitment to responsible business practices. We consistently deliver sustainable profits while prioritising environmental stewardship and social responsibility.

Our success is built on a foundation of core values that balance economic growth with positive contributions to society and the planet.

OUR EXPERTISE

Multifaceted expertise in the built environment showcasing diverse capabilities and commitment to delivering exceptional value.



NINE KEY COUNTRIES

With a multi-regional presence, we wield significant influence in every community we operate in.



OUR GLOBAL PRESENCE

ONGOING PROJECTS

MALAYSIA

URBAN TRANSFORMATION IN PENANG	
PROJECT	PROJECT VALUE
<ul style="list-style-type: none"> Silicon Island 	RM3.72 billion
WATER TREATMENT PLANT AND WATER REGULATING DAM	
Sungai Rasau Water Supply Scheme - Stage 1 (Package 1), Selangor	RM1.97 billion
Ulu Padas Hydroelectric Dam, Sabah	RM4 billion
PUBLIC INFRASTRUCTURES	
<ul style="list-style-type: none"> Gurney Marine Bridge, Penang Pan Borneo Highway Package (WPC-04), Sarawak Second Trunk Road, Batang Lupar Bridge No.2, Sarawak 	RM250 million RM1.7 billion RM236.4 million
DATA CENTRES	
<ul style="list-style-type: none"> Data Centres 	RM2.21 billion

SINGAPORE

PUBLIC INFRASTRUCTURES	
PROJECT	PROJECT VALUE
<ul style="list-style-type: none"> Gali Batu Multi-Storey Bus Depot 	SGD260 million (RM910 million)
<ul style="list-style-type: none"> Defu Station and Tunnels, MRT Cross Island Line (Phase 1) 	SGD467 million (RM1.45 billion)
<ul style="list-style-type: none"> West Coast Stations and Tunnels, MRT Cross Island Line (Phase 2) 	SGD509 million (RM1.7 billion)

AUSTRALIA

PUBLIC INFRASTRUCTURES	
PROJECT	PROJECT VALUE
<ul style="list-style-type: none"> Sydney Metro West – Western Tunnelling Package Coffs Harbour Bypass 	AUD2.1 billion (RM6.5 billion) AUD1.4 billion (RM4.1 billion)
<ul style="list-style-type: none"> M1 Motorway Extension to Raymond Terrace: Black Hill to Tomago 	AUD1 billion (RM3 billion)
WIND TURBINE	
<ul style="list-style-type: none"> Boulder Creek Wind Farm 	AUD243 million (RM702 million)
URBAN METRO SYSTEM	
<ul style="list-style-type: none"> METRONET High-Capacity Signalling Project 	AUD1.6 billion (RM5 billion)

TAIWAN

MARINE PROJECTS	
PROJECT	PROJECT VALUE
<ul style="list-style-type: none"> Seawall-Taipei Port 	NTD7.2 billion (RM933 million)
PUBLIC INFRASTRUCTURE	
<ul style="list-style-type: none"> 161kV Songshu to Guangfeng Underground Transmission Line 	NTD3.1 billion (RM463 million)
URBAN METRO SYSTEM	
<ul style="list-style-type: none"> Taoyuan City Underground Railway Project, Package CJ18 PingZhen Commuter Station Kaohsiung MRT Metropolitan Yellow Line Package YC01 	NTD14.5 billion (RM2.13 billion) NTD23.4 billion (RM3.45 billion)

COMPLETED PROJECTS

MALAYSIA

Urban Metro Systems in Kuala Lumpur

- MRT Kajang Line (Line 1)
- MRT Putrajaya Line (Line 2)

Key Intra-Urban Expressways and Highways, Klang Valley

- Lebuhraya Damansara-Puchong (LDP)
- Shah Alam Expressway (SAE)
- Western Kuala Lumpur Traffic Dispersal Scheme (SPRINT Highway)

Inter-State Rail Transport

- Electrified Double Track Project (EDTP) (Ipoh-Padang Besar)

World's First Dual-Purpose Tunnel

- Stormwater Management and Road Tunnel (SMART)

Water Regulating Dam, Water Treatment and Power Plants

- Sungai Selangor Dam, Selangor
- Rasa and Bukit Badong Water Treatment Plants (SSP3), Selangor
- Prai Power Station, Penang

Hospital, Ports and Marine Structures

- Hospital Universiti Kebangsaan Malaysia
- Lumut Naval Harbour, Perak
- North Butterworth Container Terminal, Penang

Bridges

- Kuantan Bridge, Pahang
- Pulau Bunting Bridge, Kedah

Public Infrastructure

- PMV Infra 05 – Belfield Tunnel, Kuala Lumpur

TAIWAN

Marine Projects

- Marine Bridge – Guantang
- Extension of Marine Bridge – Guantang

Urban Metro System

- Kaohsiung MRT Metropolitan Orange Line Package C04

QATAR

Highway and Airport

- Dukhan Highway
- Hamad International Airport

BAHRAIN

Bridges

- Sitra Causeway Bridges

INDIA

Key Urban Expressway and Highway

- Durgapur Expressway
- Panagarh-Palsit Highway

UNLOCKING OPPORTUNITIES WITH DT INFRASTRUCTURE



DT Infrastructure became part of the Gamuda Group following the acquisition of Downer's infrastructure projects division in 2023.

This strategic move strengthens the Group's competitiveness and accelerates our regional expansion plans.

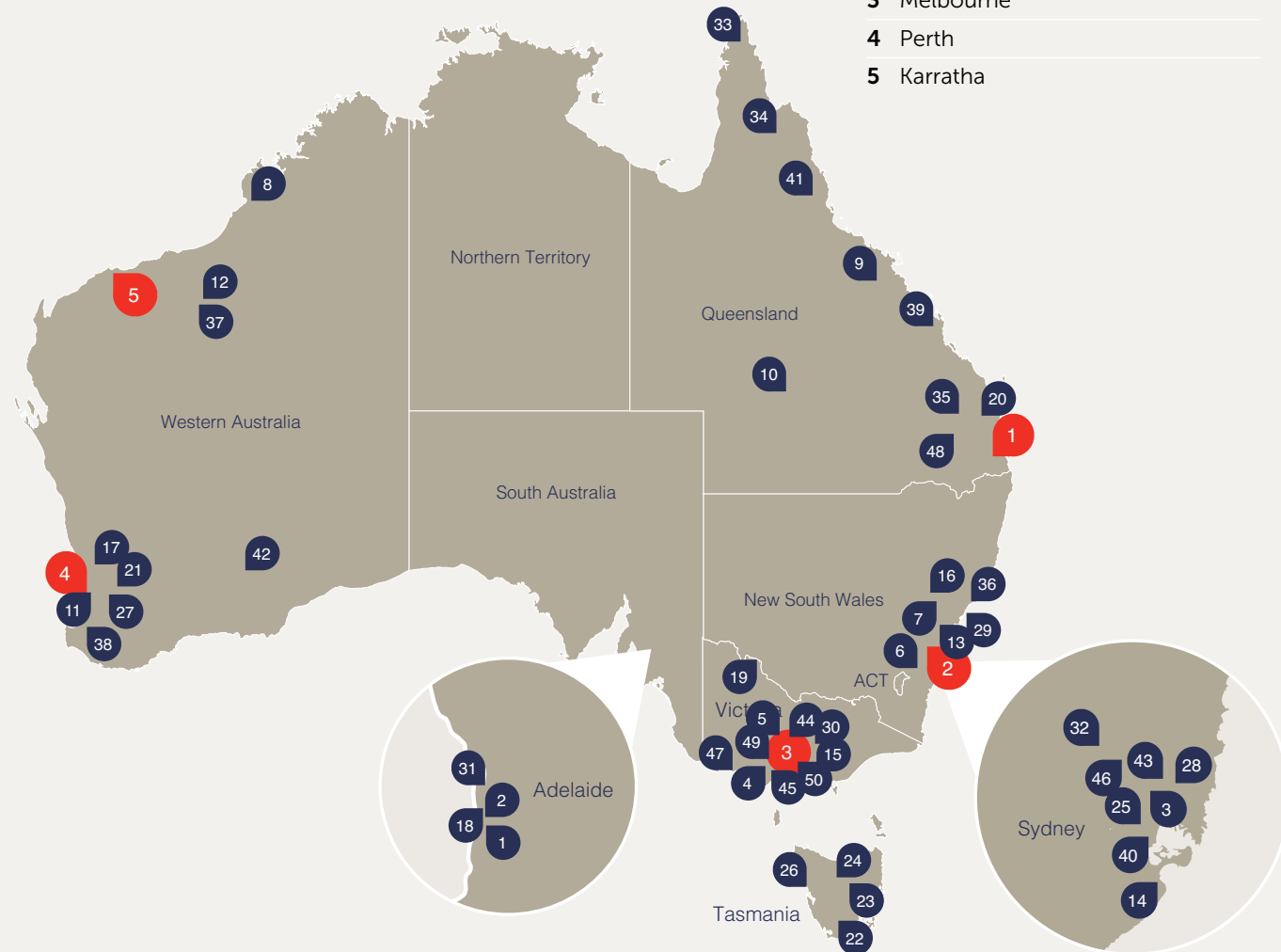
Integrating DT Infrastructure into the Group offers a unique synergy of global knowledge with local expertise in complex projects, embodying engineering innovation, collaborative contracts, and sustainable practices.

DT Infrastructure complements the existing expertise of Gamuda Engineering (GEA) in Australia.

- DT Infrastructure's core expertise:
- Rail infrastructure and maintenance
 - Roads and bridges
 - Defence
 - Power and renewables
 - Water

OFFICE LOCATIONS

- 1 Brisbane
- 2 Sydney
- 3 Melbourne
- 4 Perth
- 5 Karratha



PROJECT LOCATIONS

- | | | | | | |
|----|--|----|--|----|---|
| 1 | Adelaide Heavy Rail O&M – Infrastructure | 19 | Manangatang Resleeping Project | 36 | RAAF Base Williamstown – P0008 |
| 2 | Adelaide Light Rail – AdelLINK Tram East Extension | 20 | Maryborough Rail Depot | 37 | Rio Tinto Track Infrastructure Maintenance and Renewals Services |
| 3 | ATP – Advanced Train Control System | 21 | METRONET: Thornlie-Cockburn Link and Yanchep Rail Extension | 38 | Roelands Bridge Replacement |
| 4 | Barongarook Creek Bridge Replacement | 22 | Midland Highway Bagdad – Mangalore Stage 2 | 39 | Shoalwater Bay Training Area Remediation |
| 5 | Bendigo and Eaglehawk Station Upgrade | 23 | Midland Highway Perth Link Road | 40 | Sydney Metro Stations |
| 6 | Berry to Bomaderry Princes Highway Upgrade | 24 | Midland Highway Perth to Breadalbane | 41 | Timber Bridge Elimination North Coast Line Supply |
| 7 | Bogie Centre (Cardiff) | 25 | Mortdale Depot | 42 | Track Surfacing and Tamping |
| 8 | Broome Chinatown Revitalisation | 26 | Murchison Dam | 43 | Transport Access Programs (TAP) Train Station and Car Park Upgrades |
| 9 | Bruce Highway – Ingham to Innisfail Overtaking Lanes | 27 | Murdoch Health and Knowledge Precinct | 44 | V1 Alliance Passing Loops |
| 10 | Central West Bridge Replacements | 28 | New Intercity Fleet (NIF) Stations and Signalling Enabling Works | 45 | Waurin Ponds Duplication Alliance |
| 11 | Denny Avenue Level Crossing Removal | 29 | Newcastle Light Rail | 46 | Warringah Freeway Upgrade |
| 12 | Flash Butt Welding (Rio Tinto) | 30 | O'Herns Road Early Works and Stage 2 | 47 | Warnambool Line Upgrade – Waurin Ponds to Warnambo |
| 13 | Gosford Passing Loops | 31 | Outer Harbour Sleeper Renewal | 48 | Warrego Highway Dalby to Miles Overtaking Lanes |
| 14 | Heathcote Road Upgrade | 32 | Parramatta Light Rail Stage 1 | 49 | Western Port Highway |
| 15 | High Capacity Metro Trains – Depot | 33 | Peninsula Development Road – 10 Mile Creek and South of Duckholes | 50 | Yarra Trams Track Renewals |
| 16 | Hunter Water CTGM Pipeline | 34 | Peninsula Development Road – Kennedy River and Rocky Creek Upgrade | | |
| 17 | Karrinyup External Road Upgrade Works | 35 | QR SEQ Trenchless Culvert Replacements | | |
| 18 | Level Crossing Renewal Adelaide to Tarcoola | | | | |

OUR APPROACH TO SUSTAINABILITY

Gamuda Green Plan 2025: Making sustainable development a reality and foundation of all our business aspects.

The Gamuda Green Plan (GGP) 2025 is our strategic roadmap towards driving ESG within the Group. It empowers the Group to strategically address ESG risks and opportunities with the ultimate objective of delivering positive impact and value.

The GGP 2025 comprises four pillars and it commits the entire Group with specific steps to reduce direct and indirect corporate greenhouse gas emissions intensity by 30 percent in 2025, and by 45 percent in 2030.

OUR COMMITMENT TO SUSTAINABILITY

We ensure our ESG efforts and plans are aligned with global aspirations and standards. This allows us to understand our performances and make better-informed decisions on integrating ESG matters into our business processes.

OUR GLOBAL ALIGNMENT

We are committed to:



We are official supporter of:



We are official partner of:



We are member of:



OUR GLOBAL ATTAINMENTS

Inaugural inclusion to the FTSE4Good Bursa Malaysia ("F4GBM") and FTSE4Good Bursa Malaysia Shariah ("F4GBMS") Indexes in Q4 2023.

Since 2020, Gamuda has demonstrated an upward trajectory in ESG performance ratings across renowned global investment platforms.



GAMUDA GREEN PLAN

PILLAR 1

SUSTAINABLE PLANNING AND DESIGN FOR CONSTRUCTION

The Gamuda Green Plan 2025 is our strategic environmental, social and governance (ESG) living blueprint for the Group. This comprehensive framework was developed in 2021 to address ESG risks and opportunities while delivering positive benefits and value to the economy, environment, and communities.



PILLAR 2

OUR COMMUNITY IN OUR BUSINESS

To equip ourselves with the right ESG knowledge, become subject matter experts in our respective domains and cultivate good governance in ESG.



PILLAR 3

ENVIRONMENTAL AND BIODIVERSITY CONSERVATION

To drive impactful efforts in nature conservation and biodiversity stewardship in our developments.



PILLAR 4

ENHANCING SUSTAINABILITY VIA DIGITALISATION

By leveraging on technology and data management that will enhance and enable Group-wide efforts in sustainable developments.



OUR NET ZERO JOURNEY

Before 2021

Our Stormwater Management and Road Tunnel (SMART) project, constructed in **2002** was our first climate-related infrastructure project. The primary purpose of SMART is to address two critical issues: flood prevention and traffic congestion in Kuala Lumpur

In **2016**, we launched Gamuda Next-Gen Digital IBS, which involved the use of digital design tools and robotics for safer and more sustainable construction, resulting in minimal wastage

In **2017**, climate action became one of our material matters

In **2018**, we established Gamuda Parks to ensure biodiversity and communal spaces were integrated in our developments. This was also the foundation for our carbon sequestration efforts

In **2020**, we began disclosing our carbon emissions data via CDP

2021

Launch of the Gamuda Green Plan 2025, which aims for a 30 percent reduction in Scope 1 and Scope 2 emissions intensity by 2025, and 45 percent by 2030

- Implemented carbon traceability using cloud-based ESG software
- Aligned our sustainability reporting with TCFD
- Obtained external assurance on Scope 2 emissions
- Began monitoring our Scope 3 construction emissions

2022

Committed to being a net zero carbon organisation by 2050

- Adopted the Gamuda Group ESG Policy that includes our carbon reduction plans
- Became an official supporter of TCFD
- Committed to SBTi and became an official member of the Business Ambition for 1.5 degree celsius campaign
- Implemented an integrated cloud-based software to enhance our emissions data monitoring and reporting
- External assurance on Scope 1 and Scope 2 emissions
- Began Scope 3 emissions traceability disclosures
- Promoted supply chain readiness towards an integrated carbon reduction programme
- Acquired 30 percent equity stake in ERS Energy Sdn Bhd

2023

Received ISO14064-1 verifications for our disclosed GHG emissions data

- Report Group's emission to MGTC via Low Carbon Operating System, LCOS
- Began collecting our Scope 3 emission data from suppliers and disclosing data from eight out of the 15 emission categories according to the GHG Protocol
- Increase usage of renewable energy to 21 percent of Group total energy
- Continued validating our current state based on LCC 2030 challenge, ensuring alignment to reduction capabilities (Diamond rating)
- Introduced EV infrastructure at our offices and premises
- Building through Wetlands Arboretum Centre
- Continued to expand the conversation on renewable energy usage such as GET/RECs

2024

All project sites managed by Gamuda Engineering Australia are powered by 100% renewable energy

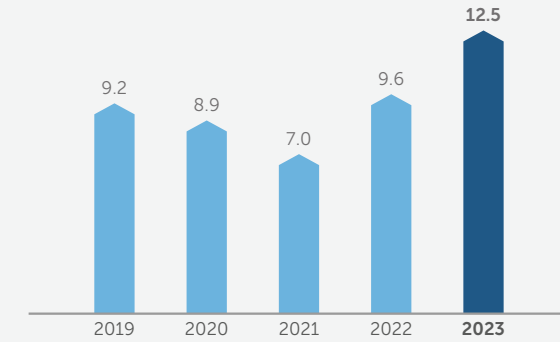
- Ranked second for the Overall ESG category in the 2024 Asia Pacific (ex-Japan) Executive team by Institutional Investor Research (II Research).
- Honoured with a Gold award in the Renewable Energy category at the ESG 2024 Positive Impact Awards, organised by The Star
- In process of validating GHG emissions targets via Science Based Target, SBTi
- Inaugural assurance for scope 3 emissions data
- Delivering works for Aula Energy for onshore wind farm in Central Queensland
- Deployment of the Mobile Solar Farm systems at the Australia's project construction area
- Gamuda Cove is home to six Tesla Superchargers and 18 Destination Chargers, making it the largest Supercharging station in Southeast Asia
- Certified The Edge Advance Wetlands Arboretum Centre (WAC) now open to academics, researchers and public
- Teaming with Rohas Tecnic Berhad (Rohas) to bid and deliver Australian transmission projects

FINANCIAL PERFORMANCE

TOTAL MARKET CAPITALISATION

RM20.1b | AUD6.4b | SGD5.8b |
NTD138.9b | VND107,911.8b | GBP3.3b

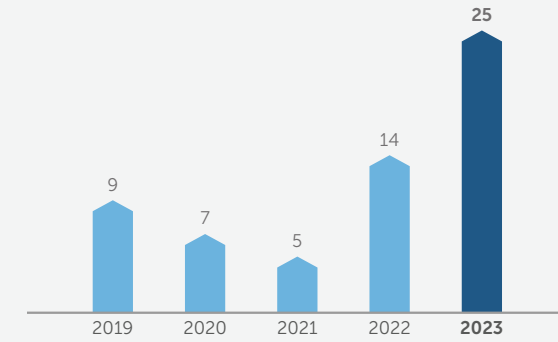
Numerical values are as of 3 July 2024



ORDERBOOK

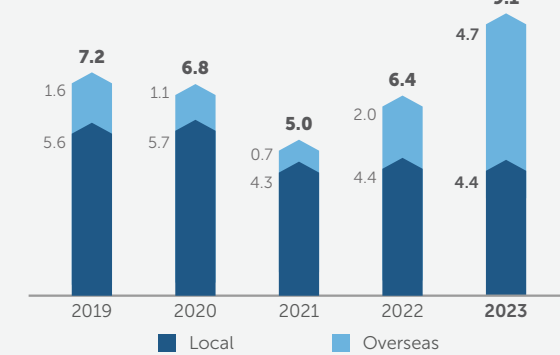
RM24b | AUD8b | SGD7b | NTD164b |
VND126,958b | 958b | GBP4b

Numerical values are as of 30 April 2024



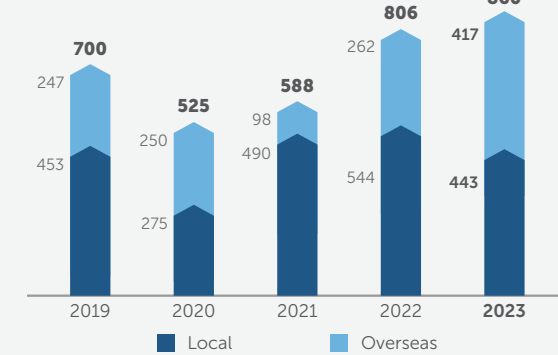
REVENUE

RM9.1b | AUD3b | SGD2.7b |
NTD63.5b | VND47,844.4b | GBP1.6b



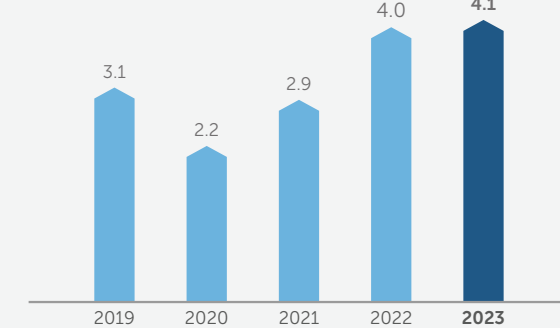
CORE NET PROFIT

RM860m | AUD285m | SGD254m |
NTD6006m | VND4,521556m | GBP148m



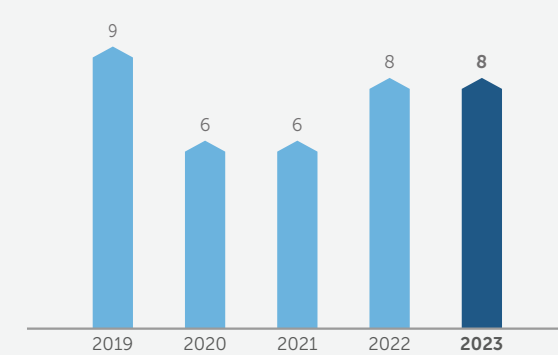
PROPERTY SALES

RM4.1b | AUD1.4b | SGD1.2b |
NTD28.6b | VND21,556b | GBP0.7b



CORE RETURN ON OWNERS' EQUITY

8%



YBHG DATO' LIN YUN LING
GROUP MANAGING DIRECTOR



The Group's sustained robust growth is a function of adept utilisation of over of almost five decades of cultivated strengths: human capital development, innovation, strategic acumen and resilience.

These cornerstones will continue to propel us forward with a greater focus on sustainability as we deliver our five-year business plan.



GROUP ORGANISATION STRUCTURE

BOARD OF DIRECTORS

YBHG TAN SRI DATO' SETIA HAJI AMBRIN BIN BUANG
Chairman

YBHG DATO' LIN YUN LING
Group Managing Director

YBHG DATO' IR HA TIING TAI
Deputy Group Managing Director

YTM RAJA DATO' SERI ELEENA BINTI ALMARHUM SULTAN AZLAN MUHIBBUDDIN SHAH AL-MAGHFUR-LAH
Non-Independent Non-Executive Director

PUAN NAZLI BINTI MOHD KHIR JOHARI
Independent Non-Executive Director

MS. CHAN WAI YEN, MILLIE
Independent Non-Executive Director

MS. CHIA AUN LING
Independent Non-Executive Director

ALTERNATE DIRECTOR:

MR. JUSTIN CHIN JING HO
Alternate to YBhg Dato' Ir Ha Tiing Tai
– Managing Director, Gamuda Engineering

YBHG DATO' LIN YUN LING
Group Managing Director

BOARD COMMITTEES

Audit
Nomination
Remuneration

HEAD OFFICE SUPPORT

- Finance and Management Accounting
- Gamuda Capital and Business Development
- Legal and Company Secretarial (LCSD)
- Integrity and Governance Unit
- Information Services and Cybersecurity
- Human Resource and Administration
- Group Corporate Communications
- Investor Relations
- Environment, Social and Governance Unit
- Internal Audit

GAMUDA ENGINEERING

MR. JUSTIN CHIN JING HO
Managing Director

GAMUDA LAND

IR CHU WAI LUNE
Chief Executive Officer

AREAS OF EXPERTISE

Adopting differentiation as a strategy in business and development





ENGINEERING A DIGITAL LEGACY

From the outset, we've embraced digitalisation across all project aspects, exemplified by our early adoption during the Stormwater Management and Road Tunnel (SMART) project, a pioneering climate mitigation initiative.

Our commitment to innovation is ingrained in our vision: **"Leading the region in breakthrough solutions."**

We remain at the forefront of infrastructure and development designs using the latest technology and tools managed in-house.

Enabling our digitalisation ambitions is the Gamuda Excellence Transformation (GET) programme, which elevates digital excellence through technology deployment across the group.

At its core is the Gamuda Digital Operating System (GDOS), a unified ecosystem that consolidates enterprise data on a single cloud platform, laying the foundation for 4D and 5D Building Information Modelling (BIM) systems, Next-Gen Digital Industrialised Building System (IBS), and Generative Artificial Intelligence (GenAI)

Our Gamuda Green Plan 2025 aims to accelerate our organisation by digitally integrating our processes. Using digital design tools and robotic construction will support our ability to measure our impacts.

The common goal towards implementing advanced digital tools, methodologies and solutions, the Group has achieved greater efficiency, precision and accuracy, cost savings, and improved project outcomes.

Four Pillars of Digital



Digital Engineering Governance
Unifying and improving our technology landscape



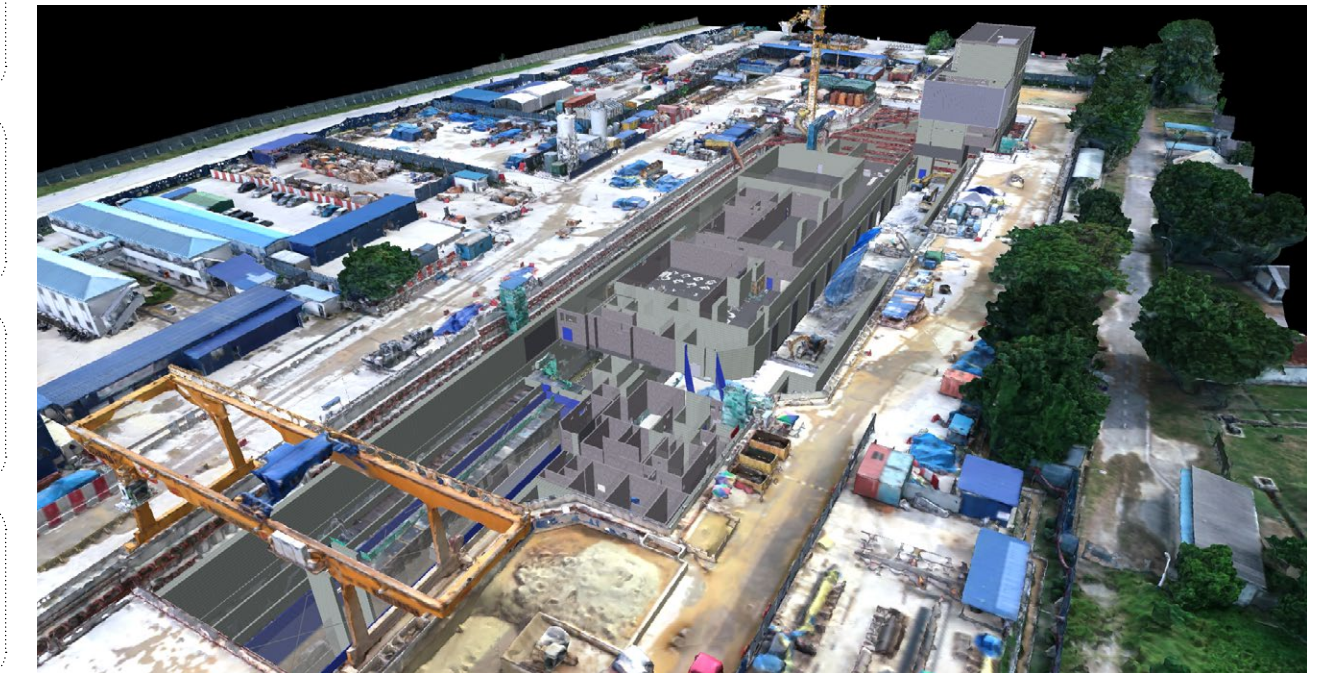
Digital Community
A community of like-minded staff to support and collaborate



Data Excellence
Improving collection, management and innovation of data across the Group



Digital Empowerment
Empowering to build solutions through our Data Hero programme



BIG DATA ENABLING GLOBAL VISIBILITY OF PROJECTS

At Gamuda, we've embraced a data-first approach to engineering, positioning ourselves as a technology-driven, data-centric organization. This approach has revolutionised our operations, fostered innovation and established new industry benchmarks. By centralising our project data through intricate and robust data warehouses, we've created a unified ecosystem that ensures easier access to critical information and facilitates improved decision-making across all levels of our organisation.

This approach has not only improved our operational efficiency but has also positioned us to leverage advanced technologies like AI and machine learning, optimizing processes, budgets, safety, and quality control across all our projects.

As a result, we've seen a transformative impact on our regional workforce, with data visualization and analytics skills becoming essential even for field personnel, fostering a more collaborative and innovative work culture.



Integrated Dashboard Offers Full Project Visibility

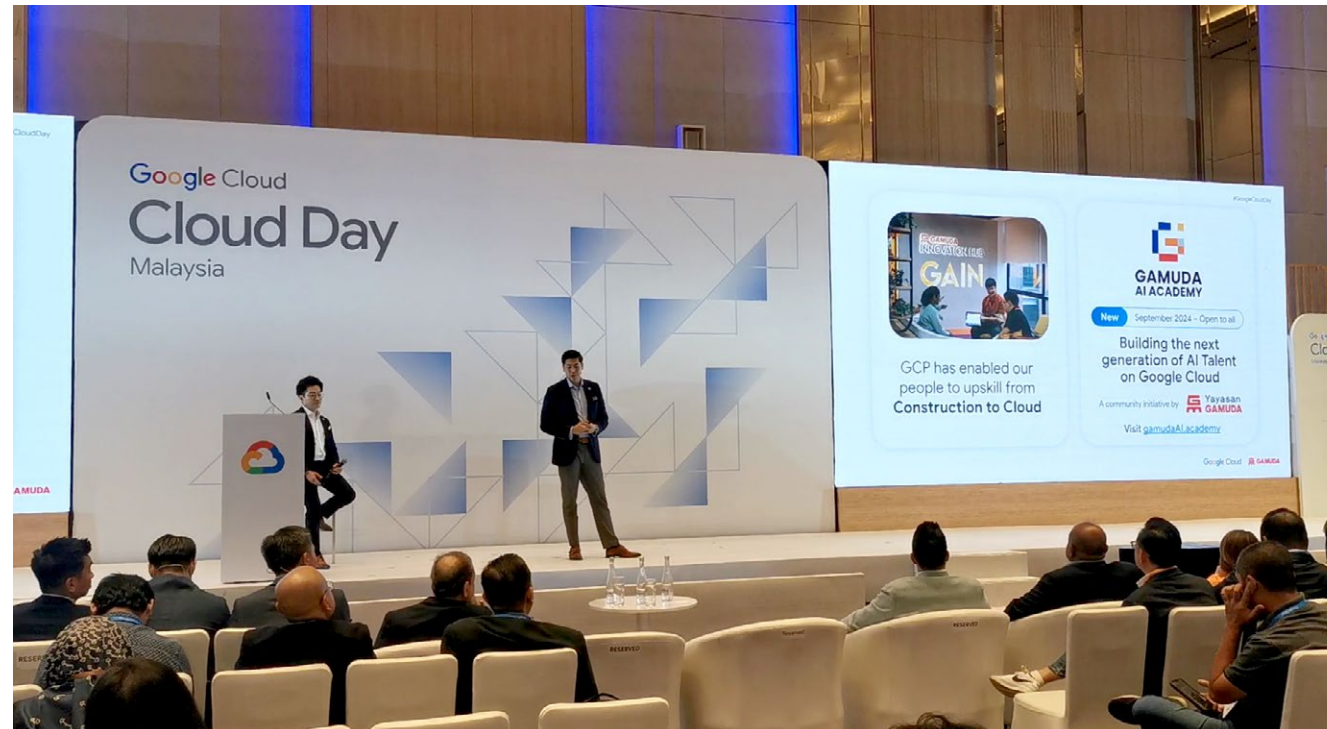
In Gamuda, we have implemented a unified platform that centralizes project data, facilitating the creation of insightful dashboards. These dashboards, powered by tools like Power BI and BigQuery, provide real-time updates on project status, operations, and various processes throughout our projects. This approach has transformed our data into a potent strategic tool, enabling management to make informed decisions and optimize project outcomes, surpassing IR4.0 industry standards.



Innovative and Novel Approach to Talent and Skills Building

Our pioneering Gamuda AI Academy offers a comprehensive three-month curriculum focusing on full-stack AI development, including front-end, backend, and AI technologies. The academy leverages Google Cloud's capabilities to develop and deploy scalable solutions and address the shortage of technology-related talents in the construction sector.

Internally, we provide a platform for talent to share and showcase ideas and breakthroughs under our monthly Masterclass programme. Our Data Hero programme has also opened avenues for Gamudians to pursue fully-sponsored cloud certification. This has led to a strong community of learners and innovators.



Extended Realities and GIS Brings Reality Context to Construction Projects

As innovators in construction, Gamuda has developed the BIMAR app to allow digital Building Information Modeling (BIM) designs to be overlaid onto physical construction sites for improved inspection, validation, and clash detection. These technologies significantly improves on-site decision-making and problem-solving. We have also commissioned the use of virtual reality headsets to simulate safety training.

Geospatial Information System (GIS) in Gamuda is used for advanced mapping, spatial analysis, and project planning. The integration of GIS with our other technological innovations enhances our ability to manage and visualize complex spatial data, further solidifying Gamuda's position as a leader in digital transformation within the construction industry.





AUTODESK CONSTRUCTION CLOUD

A unified platform to drive construction innovation across APAC



The dynamic collaboration between Gamuda and Autodesk, which began in 2022, has propelled the widespread integration of Autodesk Construction Cloud (ACC).

Gamuda utilises ACC as a key part of Gamuda Digital Operating System (GDOS), which drives the collaboration and data collection from projects.

Integrating ACC throughout our engineering processes has broken down the barriers of people operating in silos.

ACC unites teams across design, health and safety, contracts, commercial and project delivery onto a single technology platform. The unified platform allows seamless collaboration between multidisciplinary and regional teams, faster project completion time, keeping within budget, and meeting global standards.

Gamuda has established a strong strategic and collaborative relationship with Autodesk, exemplified with our talent regularly invited to speak in high-level international events such as TechX, Autodesk University, and the Construction Executive Council (CXC). Gamuda's digital efforts also have been highlighted in several publication and insights by Autodesk.



The impact at a glance

- Built a more robust common data environment where everybody can collaborate most effectively
- United multidisciplinary teams across borders to improve integrated project delivery
- Deployed and scaled digital processes across regional teams with ease
- Digitised and centralised cost management capabilities, reducing the need for manual entry
- Empowered businesses to innovate with a robust digital environment to build upon



A robust digital backbone for technology in construction

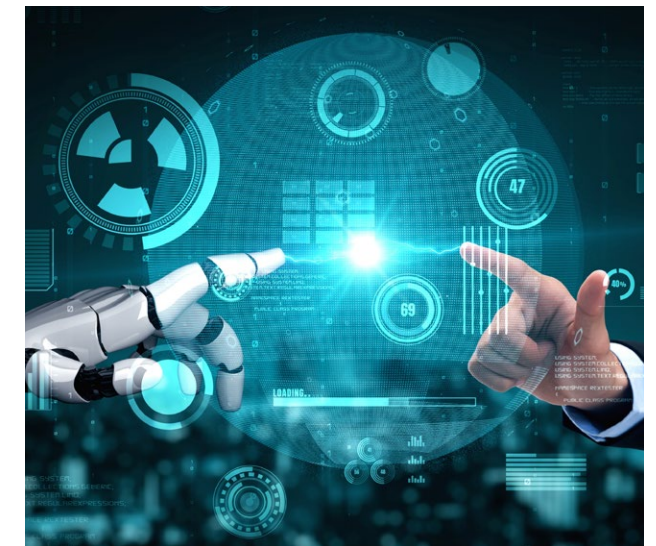
Artificial Intelligence (AI) is rapidly evolving and reshaping industries. In the construction sector, traditionally slow to embrace technological change, AI is now poised to catalyse a profound transformation and Gamuda is a step ahead.

In recent years we have strengthened our partnership with Google Cloud to integrate enterprise-grade generative AI (GenAI) capabilities and its cloud computing expertise into our operations. GenAI tools empowers our workforce to develop innovative, custom AI solutions integrated with our existing workflows.



Bot Unify: Developed in-house, Bot Unify is an AI-powered marketplace of virtual assistants accessible to all Gamuda employees. Bot Unify has been successfully employed across various departments, including tender teams, building units, ESG, and HR, streamlining operations and enhancing decision-making.

This partnership has transformed our infrastructure projects, generating significant stakeholder interest across Malaysia, Australia, Taiwan, Vietnam, Singapore, and the broader industry.

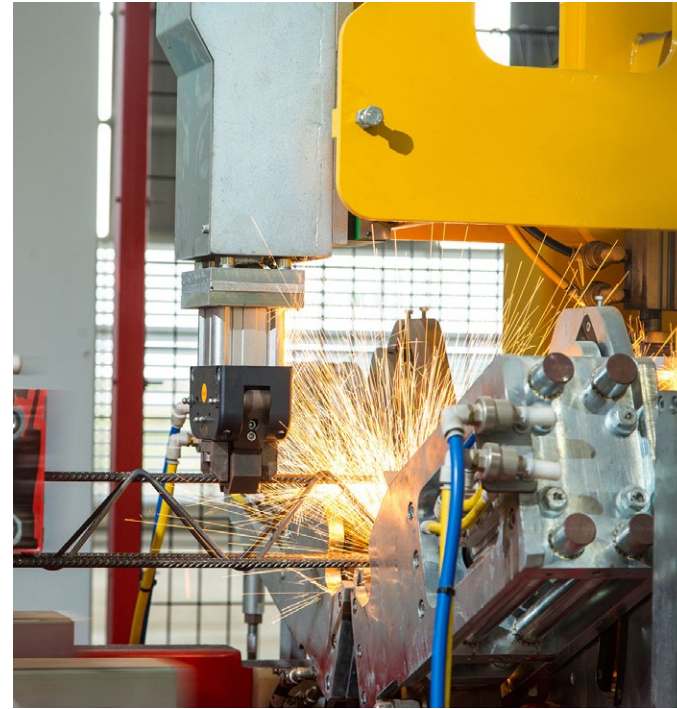


NEXT-GEN DIGITAL IBS

Gamuda's Next-Gen Digital IBS is the future of residential, commercial and infrastructure construction. From cloud design, BIM integration, robotic automation and production – this full suite of digital solutions delivers design flexibility, fast construction and superior quality finish. Importantly, the Next-Gen Digital IBS is all about sustainability. Our Next-Gen Digital IBS factories are located in Banting and Sepang, Selangor.

As Malaysia's largest manufacturing capacity, Gamuda is ramping up its production capacity to support its data centre project wins (completed within 8 months in January 2024).

Gamuda aims to transform the construction industry by adopting a fully digital ecosystem, with innovative end-to-end solutions driving this change.



Cloud-based system and design integration

A key differentiator in our township development is the accelerated adoption of 100 percent Digital IBS for both landed and high-rise projects in Gamuda Land, ensuring quality, speed, and minimal waste.

This IBS design gives us a competitive edge in bids from property developers and infrastructure builders, addressing market challenges with a focus on green building, innovation, and technology.

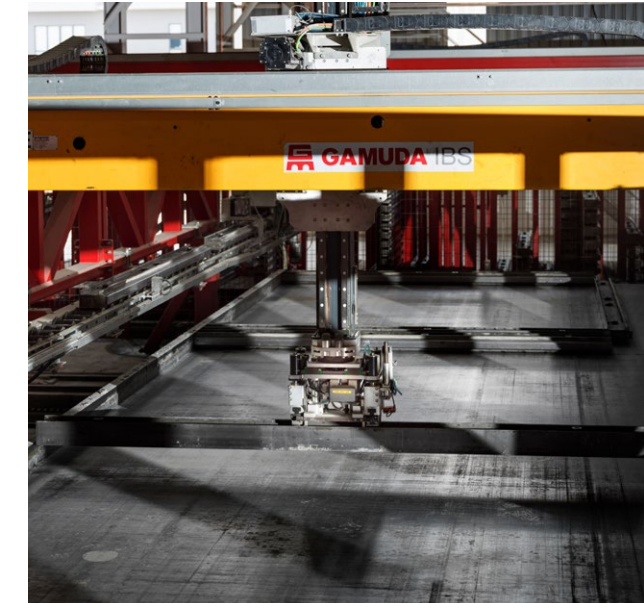
Gamuda's Next-Gen Digital IBS offers comprehensive digital services, including land-based digital design and value engineering, with various precast products for residential, commercial, and infrastructure projects.







Upskilling the nation

The Construction Research Institute of Malaysia has independently verified Gamuda's Next-Gen Digital IBS to increase builder productivity, equip contractors for the Industry 4.0 revolution and create higher-income job opportunities in Malaysia.

Our high-quality control standard is already seeing the Next-Gen Digital IBS rapidly expanding into several Gamuda Land projects, including Amber Residence at twentyfive7, GAIA Residences at Gamuda Gardens and Maya Bay Residences at Gamuda Cove and our newly launched Park Homes within all three townships.



Our portfolio					
 Data Centre	 Commercial	AI IoT robotic manufacturing system improved the materials used in making concrete panels	40% reduction in embodied carbon	55% reduction on foreign worker reliance	
		All products have QR codes that can be tracked throughout the entire supply chain	Autonomous product production using data and learnings through factory IoT network and previous iterations	Clash analysis in a cloud-based 3D building information model (BIM) allows for precise pre-planning	
 High Residential	 Landed Residential	Productivity can be monitored remotely	BIM augmented reality mobile application called BIMAR allows more accurate inspection	Like Lego bricks, home parts will be delivered in pods or boxes to the construction site and assembled from there	
		40% faster delivery			

RENEWABLE ENERGY

In alignment with the Group's Environmental, Social and Governance (ESG) approach, we have ventured into new green vertical business, focusing on renewable energy and the circular economy across the region.

Our expanding energy capabilities covers solar farms, hydroelectric dam, wind power plants, pumped hydro energy storage and transmission network upgrades and expansion.

In 2022, the Group signed the Subscription and Shareholders' Agreement (SSA) with ERS Energy Sdn Bhd (ERS Energy) and its shareholders for the subscription of new shares in ERS Energy to a 30 percent equity interest.

This strategic investment and partnership with ERS Energy accelerate Gamuda's renewable energy plans. In Malaysia, our diversification into the renewable energy business began with the NEDA 39 Solar Farm jointly delivered by ERS Energy, followed by the Ulu Padas Hydroelectric Dam.

NEDA39 SOLAR FARM, MALAYSIA

We embarked on the electricity market with the inauguration of our first Solar Power Plant in Neda Pekan, setting the stage for a greener, more sustainable future.

The 125 acres and 39MWp solar farm uses cutting-edge technology, such as solar trackers and a battery storage system to future-proof the facility.

Upon operation, NEDA39 is estimated to generate up to 64,000MWh of solar power and Renewable Energy Certificate (RECs) annually.

Project value – RM120.9 million (AUD38.7 million)
Delivery partner: ERS Energy Sdn Bhd

DEVELOPING A 39MW SOLAR POWER PLANT IN PEKAN, MALAYSIA



As we take the next step in our Australian growth plans, we aim to become a leading end-to-end energy infrastructure partner - investing, developing, building and owning assets to accelerate Australia's clean energy future.

We have partnered with **Rohas Tecnic Berhad (Rohas)** to target the country's energy transmission market, connecting renewable energy zones to the national grid. Prior to this, we also introduced **Australia's first mobile solar farm for the Western Tunnelling Package (WTP) project's onsite office.**

For DT Infrastructure, its established portfolio of renewable energy projects was a crucial factor in its acquisition, further enhancing the Group's expertise in rail construction.

Offering a comprehensive range of services from planning and construction to operations, maintenance, and decommissioning, DT Infrastructure delivers sustainable infrastructure projects under all contracting models.

BOULDER CREEK WIND FARM, AUSTRALIA

DT Infrastructure has been awarded by Aula Energy and CS Energy to deliver the Boulder Creek Wind Farm in Queensland, Australia.

This is the first wind farm project to be delivered by Gamuda Group under the DT Infrastructure brand and expected to increase the region's renewable energy supply.

The project works include 38 turbines, with a generating capacity of 228 MW (6 MW per turbine) to power approximately 85,000* homes, and civil and electrical works to construct 41km of access tracks with grades up to 15 percent and 70,000 m3 of cut/fill bulk earthworks.

Once completed, the Boulder Creek Wind Farm will significantly contribute to Queensland's goal of achieving 50 percent renewable energy generation by 2030. Project works will commence in late 2024.

*Estimated equivalent number of homes powered based on country-specific electricity household consumption data (Enerdata, 2020)



Project value – RM702 million (AUD243 million)
Design and Construct
Installation of 38 turbines and construction and electrical works of 41km of access tracks

TUNNELLING



The world's first dual-purpose stormwater diversion and motorway tunnel

Project value – RM 1.9 billion (AUD610 million)

Public-Private Partnership

Turnkey Contractor

Concessionaire

- CNN's list of top ten tunnels in the world
- United Nations-habitat Scroll of Honour Award 2011
- Special award for National Contribution, FIABCI Malaysia Property award, Malaysia Chapter 2010
- Best international project, British construction Industry award 2008
- Special award for large project, British ACE Engineering Excellence Awards 2008

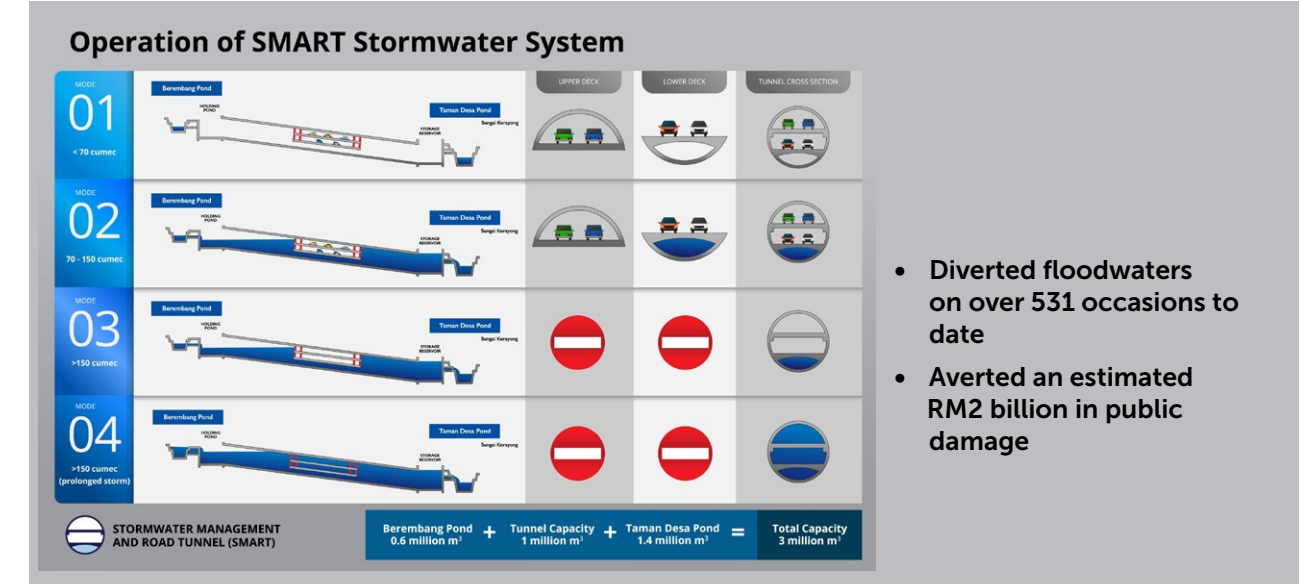


STORMWATER MANAGEMENT AND ROAD TUNNEL (SMART)

SMART left an indelible legacy on the Malaysian infrastructure engineering landscape when it took the world by storm with its unique concept to solve two of the most critical dilemmas faced by urban cities- traffic and floodwater drainage.

Functioning as a climate mitigation infrastructure since 2007, this world's first dual-purpose 13.2m diameter tunnel was constructed with a Slurry Mix-Shield Tunnel Boring Machine (TBM) – the latest in Southeast Asia and the second largest in Asia. The stormwater tunnel length runs 9.7km, while the double decking motorway length is 3km.

SMART tunnel in its own capacity could address 45 percent of Klang Valley's major floods, especially within flood-prone areas such as Masjid Jamek, Dataran Merdeka, Leboh Ampang and Jalan Melaka.



Climate mitigation innovation

SMART is touted as a visionary infrastructure built with a sustainable, climate change solution in mind. It is innovative and unique, and the design incorporates green infrastructure.

The tunnel has demonstrated the degree of urban development Malaysia has achieved and is an example for other developing countries to emulate. SMART continues to evolve and improve its ESG value.

The operations of the SMART Tunnel are classified into four different modes.

Mode 1:

No flood water will be diverted into the SMART system.

Mode 2:

The SMART system will be activated, and flood water will be diverted into a bypass tunnel in the lower channel of the motorway. Up to this point, the motorway will still be open to traffic.

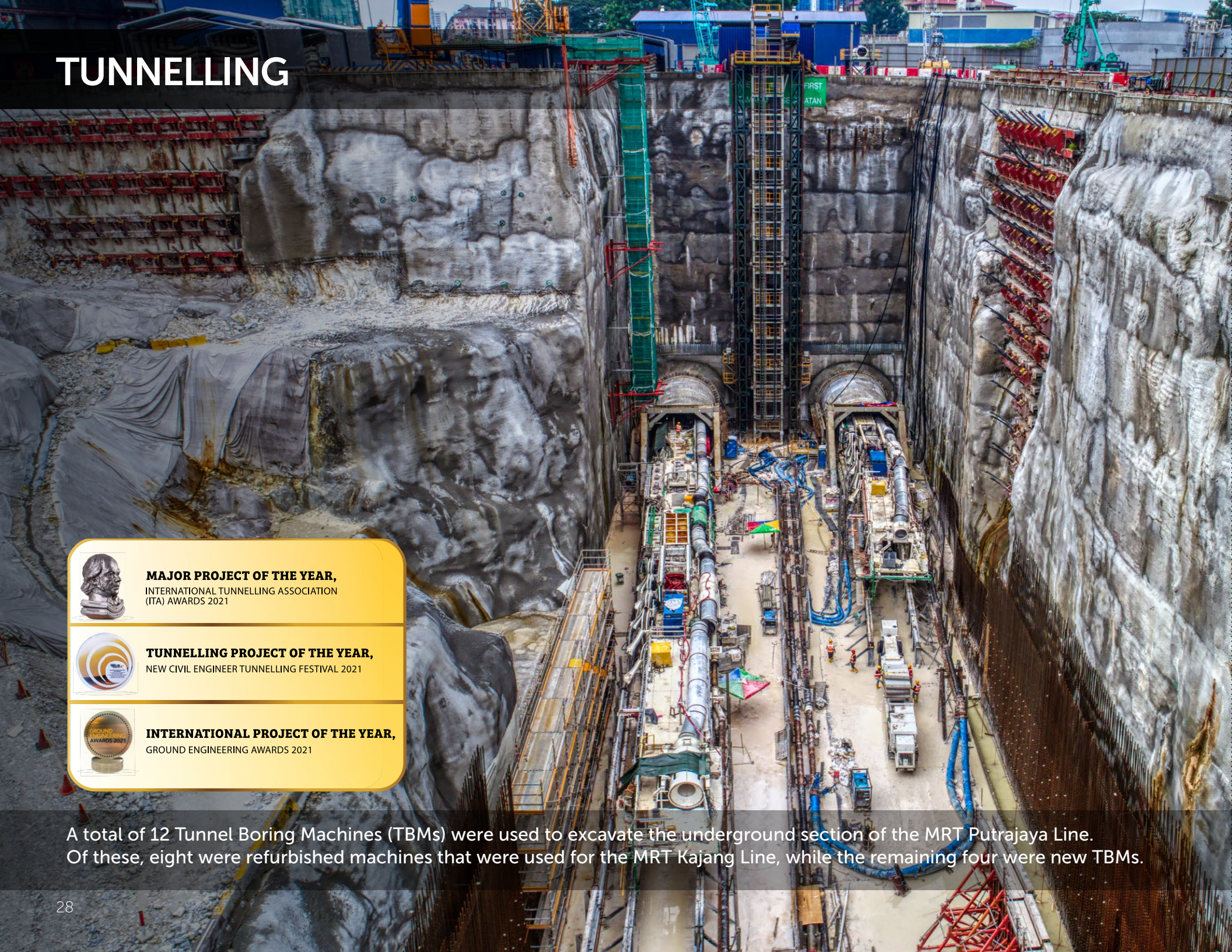
Mode 3:

The SMART system will be activated and the motorway will be cleared and closed to traffic. Sufficient time will be allocated to allow the last vehicle to exit the motorway. The tunnel is on standby mode for stormwater diversion into the motorway component.

Mode 4:

The SMART system will be activated if a heavy rainstorm prolongs, and the motorway will be filled with stormwater after all the gates are opened. Motorway components will be used for the passage of floods after traffic evacuation is completed. The motorway will be re-opened to traffic within 48 hours.

TUNNELLING



 **MAJOR PROJECT OF THE YEAR,**
INTERNATIONAL TUNNELLING ASSOCIATION
(ITA) AWARDS 2021

 **TUNNELLING PROJECT OF THE YEAR,**
NEW CIVIL ENGINEER TUNNELLING FESTIVAL 2021

 **INTERNATIONAL PROJECT OF THE YEAR,**
GROUND ENGINEERING AWARDS 2021

A total of 12 Tunnel Boring Machines (TBMs) were used to excavate the underground section of the MRT Putrajaya Line. Of these, eight were refurbished machines that were used for the MRT Kajang Line, while the remaining four were new TBMs.

UNDERGROUND TUNNELLING WORKS

Challenging geotechnical engineering

The biggest challenge in our underground construction works are the geological formations beneath Kuala Lumpur. The tunnelling works primarily face three key geological formations: Kenny Hill, Karstic Limestone and Granite, with most of the tunnel alignment situated in Grade V karstic limestone.

The underground portion of the MRT Putrajaya Line traverses very complex ground environment. There are many mixed-face conditions, as well as interfaces of different geological conditions and faults. There are quite a lot of quartz intrusions, which makes it a lot more challenging.

The land condition for the MRT Kajang Line also proved to be challenging as the tunnel had to cross the two main landforms of sand and sedimentary rock formation at Kenny Hills and limestone formations in Kuala Lumpur. To tackle these complex conditions, we saw the debut of the Variable Density (VD) TBM, the first of its kind in the world.

Variable Density Tunnel Boring Machine (VD TBM)

Gamuda's VD TBM is a versatile solution designed for various tunnelling modes with a unique feature – the ability to adjust slurry density for different ground conditions. Developed in response to challenges faced during the SMART project, the VD TBM achieved a remarkable 95 percent reduction in sinkhole incidents during the construction of the MRT Kajang Line, highlighting its effectiveness in ground control.

As the industry's first of its kind, the VD TBM continues to be optimised for the MRT Putrajaya Line, pushing the boundaries of underground construction and laying the foundation for Gamuda's Autonomous Tunnel Boring Machine (A-TBM).

- Innovation award (Variable Density in Tunnelling Technique) for MRT Kajang Line (underground), Malaysian Construction Industry Excellence Awards (MCIEA) 2017
- Technical innovation of the year, MRT Kajang Line (underground), MCI international tunnelling and underground space awards 2014



Autonomous Tunnel Boring Machine (A-TBM)

Introducing the world's first Autonomous Tunnel Boring Machine (A-TBM) – a significant upgrade from our groundbreaking VD TBM. Developed in-house, the A-TBM utilises custom artificial intelligence algorithms for autonomous control of TBM operations. Real-time analysis of machine data enables the system to take charge of steering, advancing, excavating and slurry sub-systems with minimal human input.

The result is safer tunnelling, enhanced cost efficiency, faster response times, higher accuracy, and tangible productivity. The A-TBM's capability to effectively integrate multiple TBM drives has been successfully demonstrated in MRT Putrajaya Line tunnel drives, covering four distinct geological formations.

- Innovation in Tunnel Excavation Award, New Civil Engineer Tunnelling Awards 2019
- Technical product/equipment innovation, ITA Tunnelling and Underground Space Awards 2019



RAIL AND METRO SYSTEMS

MRT KAJANG LINE

The Nation's most iconic infrastructure

Malaysia's first metro system - the Mass Rapid Transit (MRT) Kajang Line, was handled from conceptualisation to completion by our joint venture MMC Gamuda.

Pioneering the first Project Delivery Partner (PDP) model in Malaysia by taking on a single point of accountability, Gamuda guaranteed the delivery of the elevated section to safety, quality, time and cost. Featuring world-class metro facilities complete with sustainable, energy-efficient features, the MRT Kajang Line aim to serve a catchment of 1.2 million people, connecting passengers travelling between populated residential, commercial centres and key employment hubs in the Klang Valley.

The line has 29 stations, of which seven are underground, and the world's VD TBM was deployed for the underground portion of the alignment. The MRT Kajang Line is a symbol for greater and more seamless urban connectivity in Malaysia.

Project value – RM25.6 billion (AUD8.2 billion)
Project Delivery Partner (PDP)
42km 29 stations
Serving a catchment of 1.2 million people
Used highly-complex VD TBMs for challenging karstic limestone ground
Delivered MRT Kajang Line ahead of schedule and below cost

- **Builder's Award for (Civil Engineering Construction) for MRT Kajang Line (Underground), 2018**
International Federation of Asian and Western Pacific Contractors' Associations
- **Highly Commended Community Engagement Award for MRT Kajang Line (Underground), 2017**
New Civil Engineer Tunnelling Awards
- **Five Star Occupational Health and Safety Audit (Four Stars) - MRT Kajang Line (Underground), British Safety Council 2016**
- **International Safety Award (with Distinction) for MR Kajang Line (Underground), British Safety Council 2015**
- **Sector Awards Construction and Property Activities Category, British Safety Council 2015**

MRT PUTRAJAYA LINE

A success of innovation excellence

The success of MRT Kajang Line led to Gamuda delivering the MRT Putrajaya Line, solidifying the Group's reputation as the premier rail and infrastructure partner in Malaysia. As the turnkey contractor for the entire MRT Putrajaya Line alignment, Gamuda constructed the elevated and underground portions.

With 36 operational stations, of which 27 are elevated and nine underground, the second line of the KVMRT Project serves a corridor population of approximately 2 million people, stretching from Kwasa Damansara to Putrajaya, Malaysia's federal administrative centre.

This game-changing project significantly impacts the places it crosses, bringing the nation's government agencies and suburbs around Klang Valley closer to the city centre.

Project value – RM30.7 billion (AUD9.8 billion)
Turnkey Contractor
56.2km, 36 operational and five provisional stations
Serving a corridor population of approximately 2 million people
MRT Putrajaya Line's sustainable design achieved a Five-Star Sustainable INFRASTAR certification

- **Sword of Honour Award for MRT Putrajaya Line, 2022**
British Safety Council
- **Five Star Occupational Health and Safety Audit (Five Stars) – MRT Putrajaya Line (Underground), 2021**
British Safety Council
- **Sword Of Honour Award for MRT Putrajaya Line, 2020**
British Safety Council
- **Five Star Occupational Health and Safety Audit (Five Stars) – MRT Putrajaya Line (Underground), 2020**
British Safety Council
- **Augmented and Virtual Reality (Engineering), 2020**
Malaysia Technology Excellence Awards
- **Sword of Honour Award for MRT Putrajaya Line, 2019**
British Safety Council
- **Five Star Occupational Health and Safety Audit (Five Stars) – MRT Putrajaya Line (Underground), 2019**
British Safety Council
- **Best In Country Award, 2019**
- **Public Services Architecture Award for MRT Putrajaya Line Elevated Station Serambi Design, Asia Pacific Property Awards 2019**
- **Transport Infrastructure Category (BIM Level 2 and CDE, MRT Putrajaya Line), Asia Geospatial Excellence Awards 2017**
- **Digital Engineering for MRT Putrajaya Line, Asia Geospatial Awards 2017**

RAIL AND METRO SYSTEMS

ELECTRIFIED DOUBLETRACK PROJECT (EDTP)

Ipoh - Padang Besar

Working together with the Ministry of Transport, we fulfilled the Malaysian Government's objective to reduce the heavy dependence on road transport through a railway that provides more efficient inter-city travel.

The successful completion and operation of the EDTP has since provided a tremendous multiplier effect for the nation. The rail network positively impacted tourism in the northern region by increasing accessibility to major cities, commercial hubs for locals and foreigners, and a faster and more efficient cargo transportation mode to the Indo-China region.

Consisting of two tunnels, seven main stations and spanning 329km, the project involved laying two parallel electrified tracks linking the states of Perak, Kedah, Penang, and Perlis. The double-track was designed to cater for electric trains that move at speeds between 140-160kph, drastically cutting down on the average travelling time by two-thirds.

Aside from upgrading the original single track to two parallel rail tracks, the EDTP project scope included constructing new stations, various bridges, tunnels, land and marine viaducts, control centres, and a depot. We also completed the electrification of the tracks and signalling systems. Since it began transporting passengers back in 2008, the line has handled more than 20 million passengers each year.

Project value – RM12.2 billion (AUD3.9 billion)
Turnkey Contractor
329km, 23 stations
Bukit Merah Marine Viaduct – 3.5km
Prai Swing Bridge – 282m
Bukit Berapit Tunnel – 3.3km
Larut Tunnel – 0.33km

- **Best Major Infrastructure Project Award 2015**
Malaysian Construction Industry Excellence
- **National Occupational Safety and Health (OSH) Excellence Award 2012**



KAOHSIUNG MASS RAPID TRANSIT (MRT) METROPOLITAN ORANGE LINE – PACKAGE C04, TAIWAN

Before Gamuda embarked on building the SMART Tunnel, we clinched a tunnelling job in Kaohsiung, Taiwan. Working with the Kaohsiung Rapid Transit Corporation, Gamuda built 3.86km of the 43km line, which involved constructing two parallel underground tunnels and two underground stations – the two-storey Fengshan Junior High School and four-level Dadung.

Our engineering expertise was deployed in complicated situations where ground conditions were soft, wet and aggravated by earthquakes.

After completion, our rigorous approach to environmental protection, quality control and project management earned us the **Air Quality Protection Award and National Environmental Protection Outstanding Award from the Government of Taiwan in 2003.**

Project value – RM800 million (AUD263.5 million)
Design and Build
Package C04



RAIL AND METRO SYSTEMS



Largest overseas tunnelling contract

SYDNEY METRO WEST – WESTERN TUNNELLING PACKAGE, AUSTRALIA

Our ambition of becoming a regional tunnelling contractor propelled us to leverage our domestic tunnelling expertise to bid for competitive overseas tunnelling jobs. In early 2022, we successfully clinched our maiden rail tunnelling contract in Australia through the awarding of the Western Tunnelling Package (WTP), Sydney Metro West (SMW) project.

The WTP is expected to create multiplier social benefit initiatives and is Gamuda's largest overseas tunnelling contract secured to date. Early works for this project commenced in April 2022, with tunnelling in 2023 and be completed in 2025.

A huge recognition of our tunnelling credentials, we are excited to share our international experience in building high-frequency rail sustainably, and are focused on generating benefit for communities in Western Sydney. We aim to deliver this infrastructure successfully and at the same time leave a positive legacy by creating local jobs and building a solid partnership with local stakeholders and communities.

Supporting a growing city and delivering world-class metro services to more communities, this new underground railway will connect Greater Parramatta and the Sydney Central Business District. SMW will create more than 10,000 direct new jobs and 70,000 indirect jobs, with many of these jobs generated by this major contract.

Project value – RM6.5 billion (AUD2.1 billion)
Design and Construct
Twin 9km tunnels from Sydney Olympic Park to Westmead



Gamuda launched TBM Betty and TBM Dorothy, Australia's first autonomous tunnel boring machines. For the first time in Sydney Metro history, TBMs Betty and Dorothy will use non-potable water to excavate and cool themselves.



DEFU STATION AND TUNNELS – MRT CROSS ISLAND LINE (PHASE 1), SINGAPORE

Being awarded the deal to build Defu Station and Tunnels by the Singapore Land Transport Authority is another positive breakthrough for us and a testament to Gamuda's strategic business advancement in our target markets.

This also marked our second infrastructure project foray in Singapore, and an opportunity to contribute to its national agenda in major infrastructure investments benefitting both current and future generations. For the Singapore market, we continue to look forward to actively participating in its 15-year generational infrastructure upgrade plan, providing local employment opportunities, as well as expanding our international footprint in this close-to-home market given the healthy pipeline of exciting projects in the coming years.

Defu Station is one of the 12 stations on the MRT Cross Island Line (Phase 1), which serves residential and industrial areas such as Loyang, Tampines, Pasir Ris, Defu, Hougang, Serangoon North and Ang Mo Kio. Upon completion, the line will benefit more than 100,000 households along the vicinity. It is foreseen to improve access to industrial areas, leisure parks and new business hubs in the city. Defu Station commenced in the second quarter of 2022 and is scheduled for completion in 2030.

**Project value – RM1.45 billion
(AUD510 million)**

Design and Construct

One underground station and twin tunnels



WEST COAST STATION AND TUNNELS – MRT CROSS ISLAND LINE (PHASE 2), SINGAPORE

Awarded by the Singapore Land Transport Authority (LTA), West Coast Station and Tunnels for MRT Cross Island Line (Phase 2) project marks Gamuda's first independent venture in Singapore without joint venture partners.

This milestone underscores our proven capabilities and further solidifies the Group's position as a key player in the city-state's transportation infrastructure development.

A testament to our growing presence in Singapore, the West Coast Station and Tunnels package contract is Gamuda's second railway and third infrastructure projects in the country were all awarded by the Singapore Land Transport Authority (LTA).

This project is Gamuda's first independent venture in Singapore without joint venture partners.

The tunnelling package of Contract CR209 is part of the new Cross Island Line Phase 2 (CRL2), the eighth mass rapid transit (MRT) line, which comprises 15km with six (underground stations). It will be constructed along West Coast Road.

The alignment for CRL2 will improve connectivity between the eastern, western and north-eastern parts of Singapore. Upon completion by 2032, CRL2 will benefit 40,000 households living on Sunset Way and along West Coast Road, which are currently not served by any MRT line.

**Project value – RM1.7 billion
(AUD540 million)**

Design and Construct

One underground station and twin tunnels, at approximately 1.9 km

RAIL AND METRO SYSTEMS



SOURCE: RAILWAY BUREAU, MOTC, TAIWAN

TAOYUAN CITY UNDERGROUND RAILWAY PROJECT – PACKAGE CJ18 PINGZHEN COMMUTER STATION, TAIWAN

Our proven track record in designing and constructing rail and metro systems locally was instrumental to our appointment as the Main Contractor to deliver the Taoyuan City Underground Railway Project, Package CJ18 PingZhen Commuter Station in Taiwan by the Ministry of Transportation and Communications' Railway Bureau.

Upon completion, this 3.734km underground twin-bound railway track and station at PingZhen will improve mobility and reduce the traffic congestion faced by Taoyuan residents.

The project involves civil engineering and mechanical and electrical works for PingZhen Commuter Station, the ZhongFeng bridge protection works, the relocation of the LaoJie river bridge and the construction of a temporary above-ground and permanent underground PingZhen commuter station.

This is Gamuda's fifth project in Taiwan and will be executed by a 60:40 unincorporated joint venture between Gamuda and Asia World Engineering & Construction Co. (AWEC), respectively. The project is estimated to be completed within 96 months.

Project value – RM2.13 billion (AUD680 million)
Design and Construct
3.734km underground twin-bound railway track and one underground station



KAOHSIUNG MASS RAPID TRANSIT (MRT) METROPOLITAN YELLOW LINE – PACKAGE YC01, TAIWAN

Our successful delivery of the award-winning Kaohsiung Mass Rapid Transit (MRT) Orange Line in Taiwan led to us clinching the Kaohsiung MRT Metropolitan Yellow Line Civil Engineering, Package YC01.

The project involves the construction of a 4.4km alignment located within NiaoSong District of which 3.5km comprises underground twin bored tunnels and 0.9km of elevated tracks, four stations (three underground and one above ground) and two crossovers and cross passages.

This project marks Gamuda's third railway project and sixth infrastructure project in Taiwan, reinforcing the Group's reputation as the leading partner for rail and infrastructure development in the region.

Estimated to be completed in 2032, this project is expected to serve 1.16 million people, significantly improving connectivity for over 40 percent of the city's total population and further enhancing services in six key districts - NiaoSong, SanMin, LingYa, XinXing, FengShan and QianZhen.

Project value: RM3.45 billion (AUD1.1 billion)
3.5km underground twin bored tunnels and 0.9km of elevated tracks, with four stations (3 underground and 1 above ground)
Design and Construct



METRONET HIGH-CAPACITY SIGNALLING PROJECT, AUSTRALIA

Gamuda, through DT Infrastructure, has been awarded a landmark signalling project by the Public Transport Authority (PTA) of Western Australia. This is the world's largest signalling project by route length, further solidifying Gamuda's strategic position in Australia and underscoring our expertise in delivering large-scale rail and metro systems work.

The project works include designing, supplying, testing, commissioning and maintaining the state-of-art Urbalis communications-based train control on Perth's suburban rail networks. Additionally, we will be upgrading the existing signalling and control systems to an integrated communications-based train control system. The project will be delivered in multiple line-by-line stages to minimise disruption to train operators.

Upon completion, the project will enable 40 percent increase in network capacity, energy-saving benefits, leading cybersecurity and future-proofing of the network for growth with minimum disruption to commuters.

This project will be executed by a 46:54 joint venture between DT Infrastructure and ALSTOM Transport Australia Pty Limited, respectively. Early works for this project commenced in the second half of 2024.

Project value – RM5 billion (AUD1.6 billion)
Design, supply, installation, testing, commissioning and maintenance
Upgrading the existing signalling and control systems

AIRPORT

HAMAD INTERNATIONAL AIRPORT, QATAR

Leading a consortium of experienced builders and working seamlessly with global project manager Bechtel, the Hamad International Airport was Gamuda's first project in the Gulf States.

We were awarded the design and construction of the airport's airfield facilities, access tunnels and detention ponds. The airfield facilities were designed to cater to the latest large-body aircrafts with two runways (asphalt), three parallel taxiways (asphalt), twelve aircraft parking aprons (concrete), remote parking bays, drainage works and Airfield Ground Lighting (AGL) facilities.

The runways were constructed under world-class engineering standards and required meticulous planning and precision programming.

Design and Build
Project value – RM3.45 billion (AUD1.1 billion)
Package CP10



BRIDGES



SITRA CAUSEWAY BRIDGES, BAHRAIN

We take pride in building modern bridges that are both architecturally majestic and able to withstand harsh weather fluctuations with expertise to bring bridge designs to life.

We constructed the replacement of the existing bridge to a 4km dual four-lane carriage freeway in heavily congested traffic. Flyovers and interchanges were built at both ends of the causeway of Umm Al Hassam and North Sitra.

Project value – RM679 million (AUD217.4 million)
Build



BATANG LUPAR BRIDGE NO. 2, MALAYSIA

Under the Second Trunk Road network, we were awarded the design and construction of 870m modified cable-stayed bridge structure spanning across the existing Batang Lupar river and 2.1km of approach road.

This project marks a significant milestone in Sarawak's transportation network. Upon completion, the bridge will be Malaysia's tallest and second-longest cable-stayed bridge span.

Project value - RM236.4 million (AUD75.7 million)
Design and Construct
Package B3



KUANTAN BRIDGE, MALAYSIA

As the key developer of the Kuantan Bridge, now one of the most iconic bridges on the east coast of Peninsular Malaysia, we were responsible for constructing the four bridge lanes.

Project value – RM60.9 million (AUD19.5 million)
Build



PULAU BUNTING BRIDGE, MALAYSIA

We undertook the design, construction and completion works for the 2.3km-long, 13m-wide sea crossing between Pulau Bunting and Kedah.

Project value – RM102 million (AUD32.7 million)
Design and Construct

ROADS AND EXPRESSWAYS



MALAYSIA'S MAJOR INTRA-URBAN HIGHWAY BUILDER

Our extensive engineering reputation includes designing, testing, commissioning and constructing major road projects spanning hundreds of kilometres.

Through our intra-urban highways – Lebuhraya Damansara-Puchong (LDP), Shah Alam Expressway (SAE), Western Kuala Lumpur Traffic Dispersal Scheme (SPRINT Highway), we improved connectivity and accessibility for local communities across Klang Valley, and catalysed the developments and job creation, fostering long-term economic growth.

Project value – RM3.48 billion (AUD1.12 billion)
Design, Build, Finance, Operate
Infrastructure Concessions
Spanning 110km, serving over 2 million motorists daily



SHAH ALAM EXPRESSWAY (SAE)

The Shah Alam Expressway (SAE), also known as KESAS is a 34.5km, dual three-lane road with 12 interchanges and three toll plazas. This road allowed several new townships to flourish, including Gamuda's very own Kota Kemuning, a 740-hectare township, our maiden attempt into property development and we have built many more since then.

The SAE links many areas in Greater Kuala Lumpur to Port Klang, Malaysia's largest port (the world's 12th best container port). Port Klang is located approximately 25km southwest of Kuala Lumpur City Centre, and the opening of SAE has enabled the easy movement of freight in and out of Malaysia.



LEBUHRAYA DAMANSARA PUCHONG (LDP)

The Lebuhraya Damansara-Puchong (LDP) was Gamuda's second foray into highway construction. Connecting two key satellite towns in the Klang Valley, the LDP spans a 40km dual three-lane expressway with 19 interchanges, 21 bridges and four toll plazas. LDP also saw the construction of the first cable-stayed land bridge in Malaysia. The three-level overpass spans 600m over the Federal Highway and remains an important landmark until today.



WESTERN KUALA LUMPUR TRAFFIC DISPERSAL SCHEME – SPRINT HIGHWAY

Connecting the Kerinchi Link, Damansara Link and Penchala Link wasn't an easy feat, but the SPRINT Highway did just that. The SPRINT Highway is a 26.5km dual three-lane road with 13 interchanges, 10 pedestrian bridges, three toll plazas and 700m twin-bore tunnels.

ROADS AND EXPRESSWAYS



COFFS HARBOUR BYPASS, AUSTRALIA

The Coffs Harbour Bypass is Gamuda's second big infrastructure win in New South Wales (NSW), Australia. Gamuda Australia, in a 50:50 joint venture with Ferrovial Construction (FGJV), was appointed by the NSW Government in mid-2022 to deliver the final piece of the Pacific Highway upgrade project.

The project will reduce travel times along the Pacific Highway. It will also boost the regional economy in the coastal city and improve connectivity, road transport efficiency and safety for local and interstate motorists.

We are geared to contribute to the largest infrastructure project in Coffs Harbour's history that will reshape the city's infrastructure connectivity by combining engineering smarts and environmental and sustainability innovation to ensure a positive legacy far beyond construction. The Bypass is expected to be open to traffic from late 2026.

Project value – RM4.1 billion (AUD1.4 billion)
Design and Construct
14km new, upgraded four-lane highway



M1 MOTORWAY EXTENSION TO RAYMOND TERRACE: BLACK HILL TO TOMAGO WORKS, AUSTRALIA

Gamuda Australia, in a 60:40 joint venture with John Holland, was awarded the contract to deliver the Black Hill to Tomago Package of Works for the M1 Motorway Extension to Raymond Terrace by the NSW Government.

The project is one of the largest infrastructure projects in the Hunter region's history. It's a game changer for local, regional and long-distance transport, unlocking congested Hunter roads and helping complete a traffic-light-free highway between Sydney and Brisbane. The project is scheduled to begin in mid-2023 and is expected to be open to traffic in mid-2028.

Project value – RM3 billion (AUD1 billion)
Design and Construct
10km of greenfield dual carriage highway



DUKHAN HIGHWAY, QATAR

The 42.5km long highway connects Shahaniya town to the existing Zekreet interchange near the Dukhan Industrial area. This construction project included grade separated interchanges, bridges and ancillary works for the four-lane dual carriageway.

Project value – RM787 million (AUD252 million)
Build
42.5km highway, 5 grade separated interchanges and 7 camel underpasses



DURGAPUR EXPRESSWAY AND PANAGARH-PALSIT HIGHWAY, INDIA

We entered the international civil infrastructure market with the colossal Panagarh-Palsit Highway and Durgapur Expressways.

Forming a part of West Bengal's National Highway 2 and at a combined length of almost 130km, these expressways were completed on a Build-Operate-Transfer basis, and our expertise included design, supervision and construction of service roads, bridges, interchanges, overpasses and toll booths.

Gamuda operates and maintains both expressways with the National Highways Authority of India.

Project value – RM286 million (AUD91.6 million)
Design, Build, Finance and Maintenance
128km road upgrade, 25 underpasses and 4 overpasses

URBAN REGENERATION



YEN SO SEWAGE TREATMENT PLANT AND YEN SO PARK, VIETNAM

The Yen So Sewage Treatment Plant and Yen So Park are Gamuda Land's expansion at its maiden township development of Gamuda City in Hanoi. The absence of a proper sewage system had resulted in contamination of its waterways and lakes, which created growing concern for public health and the need for better water management practices.

Backed by our credible experience and expertise in drainage and wastewater treatment projects, a proposal was made to the Hanoi government to build Yen So Sewage Treatment Plant and to rejuvenate Yen So Park.

Working alongside the Hanoi People's Committee on design, construction, testing and commissioning works, we constructed a plant that could treat up to 200,000m³ of wastewater every day.

Meanwhile, environmental rehabilitation of the Yen So Park and Yen So Lakes remained a remarkable turnaround story depicting the transformation of one of Hanoi's most polluted and inhospitable areas into a thriving green lung. The project has improved the community's quality of life, as well as the water quality in surrounding rivers, lakes and drains.

- **Environmental (Rehabilitation/Conservation) (World Gold Award) 2018**
FIABCI World Prix d'Excellence Award
- **Merit Innovative Planning Award (Masterplan Sector) 2018**
Malaysian Institute of Planners (MIP) Planning Excellence Awards

Project value – RM735 million (AUD235.4 million)
Design, Build, Operate and Transfer
Urban Renewal



ULU PADAS HYDROELECTRIC DAM

Our proven track record in designing and constructing a dam and water treatment plants locally was pivotal in securing the Ulu Padas Hydroelectric Dam in Tenom, Sabah.

The development holds significant importance for Sabah in providing a reliable renewable energy source. With a capacity of 187.5 megawatts, this hydroelectric dam will substantially contribute to the state's power supply grid.

Aimed to be completed by 2029, the dam will invigorate Sabah's western coastal corridor, sparking socio-economic growth along its pipelines.

**Project value – RM4 billion
(AUD1.28 billion)**

Design and Construct



SUNGAI SELANGOR DAM

While Malaysia may be blessed with a relatively high amount of rainfall, storing rain for the dry days through dams is still necessary as rainfall is not evenly distributed throughout the year.

In 2000, Gamuda clinched the job to ensure water supply security for residents living in Selangor, Kuala Lumpur and Putrajaya through the construction of Sungai Selangor Dam, a regulating dam to store water from a pristine tropical forest catchment.

Collectively called Phase 3 of the Sungai Selangor Water Supply Scheme (SSP3), the project entailed the design and construction of a 110-metre rock-filled regulating dam with storage capacity of 235 million cubic metres, river intake works, pipelines and two water treatment plants - one in Rasa and other in Bukit Badong. Gamuda's total water concessions provide 2,000 million litres per day of potable water.

**Project value – RM2.15 billion
(AUD690 million)**

Design, Build, Operate and Transfer



SUNGAI RASAU WATER SUPPLY SCHEME - (STAGE 1)

Our proven track record in designing and constructing a dam and water treatment plants locally was instrumental to our appointment as the Main Contractor for the Sungai Rasau Water Supply Scheme (Stage 1) by Pengurusan Air Selangor Sdn. Bhd. Our work scope includes designing and building the Rasau intake, raw water pumping mains, water treatment and associated works.

This project is crucial as Sungai Selangor Scheme is currently the only source of raw water supply to the Klang Region. With the implementation of the Rasau Scheme, the water reserve margin is expected to increase to 20.9 percent, with an estimated clean water supply of up to 700 million litres daily. This 35.5-month project is aimed to be completed by end 2025.

**Project value – RM1.97 billion
(AUD630 million)**

Design and Construct



RASA AND BUKIT BADONG WATER TREATMENT PLANTS

Providing clean and safe water for Malaysia's biggest cities, SSP3 consists at two water treatment plants - one in Rasa with a 250 million litres per day (mld) capacity and the other in Bukit Badong with an 800 mld capacity. These water treatment plants feature clarifiers, water quality monitors, disinfection and pH correction technology; engineered to be reliable, efficient and ready to serve the needs of surrounding residents.

**Project value – RM2.2 billion
(AUD700 million)**

Design and Build



PRAI POWER STATION

Working with the National Electricity Board of Malaysia on the administration building, turbine blocks, power house and boiler plinths of this single-shaft power plant – making the Prai Power Plant the first of its kind in Southeast Asia at the time.

**Project value - RM5.9 million
(AUD1.9 million)**

Build

PORTS, MARINE STRUCTURES, BUILDINGS AND UTILITIES

Our engineering solutions spanning from deep and shallow water jetties to teaching hospitals, thermal power stations and beyond, accomplished through innovative excellence, project management experience and advanced technical expertise.



MARINE BRIDGE GUANTANG

The project at Guantang, Taiwan involves the construction and completion of a 1.61km marine bridge connecting a receiving terminal to a man-made island and a 284m long road embankment, and includes soil investigation, foundation, a temporary bridge, and a working platform with environmental protection works.

Project value - RM824 million (AUD263.9 million)

Build



SEAWALL-TAIPEI PORT

Seawall-Taipei Port is Gamuda's third project in Taiwan. It involves the construction of a 4,014m-long seawall for a reclamation project in the logistics storage area of Taipei port, dismantling existing 945m of seawall structures, and Southport shore protection works.

Project value - RM933 million (AUD298.8 million)

Build



GALI BATU MULTI-STOREY BUS DEPOT

This is our first infrastructure project in Singapore and the largest bus depot in the country. Construction work includes a five-storey main bus depot to support more than 200 e-buses with 120 electric vehicles (EV) chargers, installation of 4,736 solar panels and other green features in line with Singapore Green Plan 2030 on driving sustainable development.

Project value - RM910 million (AUD291.4 million)

Design and Construct



161KV SONGSHU TO GUANGFENG UNDERGROUND TRANSMISSION LINE

Gamuda's fourth foray in Taiwan is the 161kV underground transmission line project from Songshu to Guangfeng. The 7.3km design and build contract includes cable tunnelling works through TBM mining, open-cut, and pipe jacking.

Project value - RM463 million (AUD148.3 million)

Design and Construct



NORTH BUTTERWORTH CONTAINER TERMINAL

The North Butterworth Container Terminal was a civil project pioneered by Gamuda Berhad in the early 1990s. Working with the Penang Port Commission, we constructed the container wharf and approach bridge and container buildings, and utilities – effectively raising the productivity and robustness of Penang Port, now a prime shipping port in Peninsular Malaysia.

Project value - RM81 million (AUD25.9 million)

Build



LUMUT NAVAL HARBOUR

One of the earliest and most challenging marine-based turnkey projects we undertook was the Lumut Naval Dockyard and Offshore Structures in Perak. Now known as the Home of the Royal Marine Navy, this project marked our foray into large-scale marine engineering.

Project value - RM15.6 million (AUD5 million)

Build



HOSPITAL UNIVERSITI KEBANGSAAN MALAYSIA

A major part of the University Kebangsaan Malaysia medical faculty, our work at the 1,040-bed Hospital Universiti Kebangsaan Malaysia (HUKM) included completing clinical and education blocks, as well as hostels and quarters for students and staff. Upon completion, the faculty was easily one of the largest and most comprehensive of its kind in the country.

Project value - RM327.8 million (AUD105 million)

Build

TOWNSHIPS

1. The Edge Malaysia Top Property Developers Award 2023 - Top 1, Gamuda Land
2. The Edge Malaysia Top Property Developers Award 2023 - Best in Qualitative Attributes
3. The Edge Malaysia Top Property Developers Award 2023 - Best in Quantitative Attributes
4. FIABCI World Prix d'Excellence 2023 - Celadon City, Celadon Sports and Resort Club, Purpose-built Category
5. The Edge Malaysia Best Managed and Sustainable Property Awards 2024 - Jade Hills, 10 Years And Above: Non-Strata Residential (Gold)
6. Malaysia Landscape Architectural Awards (MLAA14) 2024 - Gamuda Cove, Low Carbon City Landscape Framework, Excellence Awards
7. Malaysia Landscape Architectural Awards (MLAA14) 2024 - CSR Category Green Initiatives Awards, Excellence Awards
8. Malaysia Landscape Architectural Awards (MLAA14) 2024 - Jade Hills Central Park, Professional Category Landscape Design Awards (Malaysian Project), Honour Awards
9. Malaysia Landscape Architectural Awards (MLAA14) 2024 - SplashMania Waterpark, Professional Category Landscape Design Awards (Malaysian Project), Honour Awards
10. MalaysiaGBC Leadership In Sustainability Awards 2024 - Gamuda Land, Business Leadership in Sustainability, Gold award
11. MalaysiaGBC Leadership In Sustainability Awards 2024 - Gamuda Land, Innovations in Sustainability, Platinum award
12. MalaysiaGBC Leadership In Sustainability Awards 2024 - Wetlands Arboretum Centre, Leadership in Sustainable Design and Performance, Merit award



MAKING GOOD AND SUSTAINABLE TOWNS

Gamuda Land, the property development division, is widely recognised as one of the nation's leading property developers. Through the culmination of over twenty years of building sustainable townships, Gamuda Land thrives on its development principles of a responsible town-maker through mindful masterplanning and quality execution.

Our vision in developing vibrant, smart and sustainable townships for the community has led to our success in Malaysia and expansion into the international market such as Australia, Vietnam, Singapore, and the United Kingdom.

- **Total landbank of 8,963 acres**
- **Remaining landbank of 2,433 acres**
- **15 townships, 16 vertical communities and one commercial office across Australia, Vietnam, Singapore, the United Kingdom, and Malaysia**
- **More than 57,000 homes built**
- **More than RM100 billion in Gross Development Value**

Updated as at June 2024

OUR LOCAL DEVELOPMENTS



Nature Sanctuary, Smart City

- 1,530-acre township in Southern Klang Valley within close proximity to Cyberjaya and KLIA
- 60-acre Central Park and 90-acre Wetlands Arboretum
- Dedicated interchange
- GBI Gold certified (core business district planning assessment)
- 5-Diamond Rating Low Carbon City Framework



GAMUDA GARDENS

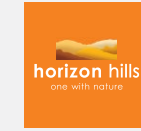
In a Garden Where Happiness Lives

- 810-acre township in Sungai Buloh North
- Two waterfalls and five cascading lakes integrated into a 50-acre Central Park
- GBI Silver certified
- 4-Diamond Rating Low Carbon City Framework



Premier Green Lung of Kajang

- 338-acre freehold residential township
- 20 percent of development allocated as a green lung
- 12 thematic gardens with walkways and recreational facilities
- CONQUAS rated



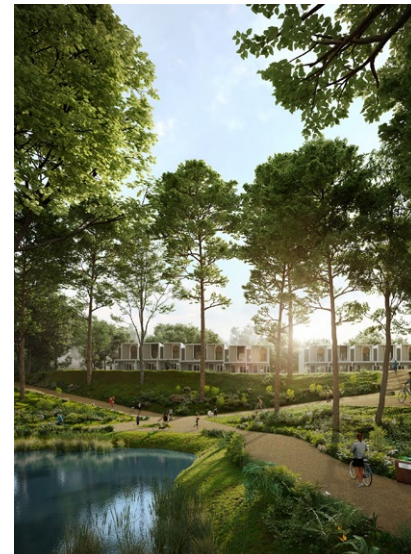
A Township That is One with Nature

- 1,228-acre freehold gated residential development
- 200-acre, 18-hole, par 72 international standard golf course
- Deemed Iskandar Malaysia's Most Liveable Township by the Iskandar Regional Development Authority (IRDA)



Vibrant Quayside Living

- 257-acre township in South of Kota Kemuning
- Vibrant Quayside Mall featuring 110 outlets with a waterfront promenade
- Features The Buzz.ar, a community gathering spot for eating, sports, wellness and relaxation
- 3-Diamond Rating Low Carbon City Framework



GARDENS PARK

A Town in a Park

- 532-acre freehold township adjacent to Gamuda Gardens
- 1km Park Connector to Gamuda Gardens
- 50-acre Ring Park



Modern Countryside Living

- 89-acre boutique residential enclave in Sungai Buloh North
- Four interconnected parks with activities for residents of all ages
- Fosters organic, community farming that cultivates closer community living

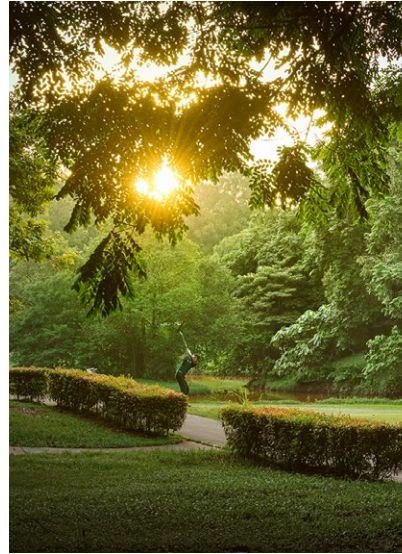


KOTA KEMUNING

Where People and Nature Come Together

- 1,854-acre township
- Resort inspired freehold and self-contained township including golf club, commercial and business district on top of residential precincts
- CONQUAS rated

OUR LOCAL DEVELOPMENTS



Valencia

Living Amidst Thriving Biodiversity

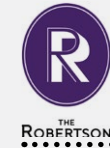
- 278-acre freehold gated and exclusive residential development
- First residents-only golf course
- CONQUAS rated



BANDAR BOTANIC

A Green Masterplan in Klang

- 1,242-acre freehold mixed development township
- Ambang Botanic, the first gated and guarded community in Klang
- 100-acre green lung, low density neighbourhood
- CONQUAS rated



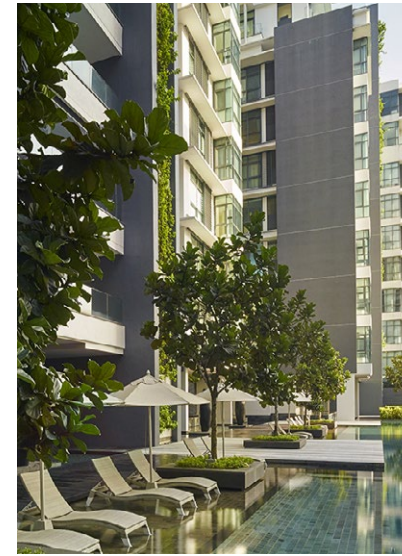
A Good Investment Begins with a Good Address

- Located in the heart of KL with great connectivity
- 9-hole private putting green at podium level
- GBI Gold certified



Highland Retreat Inspired Living

- Nestled within the Inanam mountains offering breathtaking views of Kota Kinabalu city and the South China Sea.
- Curve 25 retail segments at the heart of the development creates a community focal point
- 1.9-acre facility podium
- Earthquake-resistant structure



The Epitome of Luxurious Living

- 2.2-acre freehold residential development along Embassy Row
- Exclusive condominium with palatial proportions
- CONQUAS rated

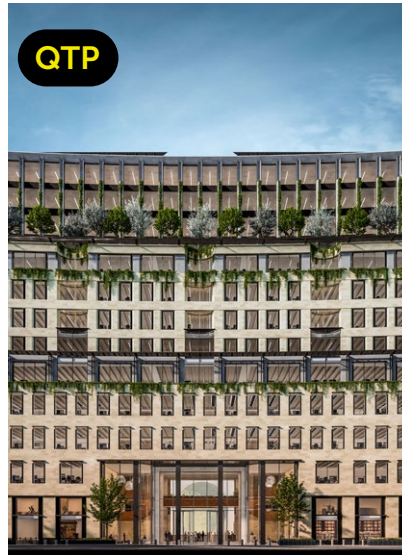


Prime Freehold Residences in Petaling Jaya

- 3.38 acres of lush landscaped greens
- Five elevated parks and aerial gardens
- GBI Gold certified



OUR INTERNATIONAL DEVELOPMENTS



QTP

75 LONDON WALL

- Earlier referred to as Winchester House and formerly the UK headquarters of Deutsche Bank
- Best-in-class Premium ESG Office Space located in London's Square Mile, the city's financial centre and mega-tech hub
- Upcoming 11 storey, top-tier, environmentally sustainable office space
- A Building Research Establishment Environmental Assessment Method (BREEAM) Outstanding rated property



QTP



This development will feature homes together with offices and retail space centred around a new public courtyard, adding to the local vibrancy and urban renewal of West Hampstead



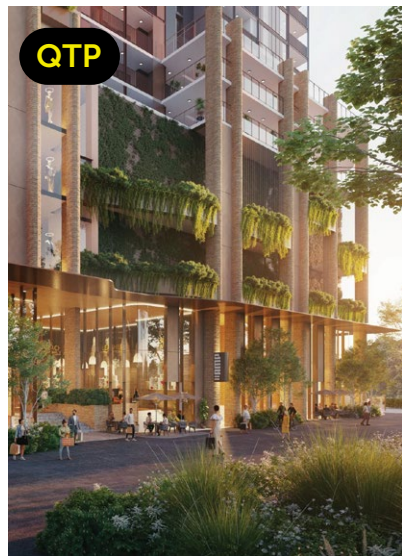
QTP

ALDGATE

Delivering community-focused micro-living development within the Aldgate Cluster in London



- 130,832 sq ft luxury residential club-condo
- Strategically located 14 minutes from Singapore's CBD
- Bespoke concierge and on-demand services



QTP

THE CANOPY

ON NORMANBY

- Approximately 1.2km from the Melbourne Central Business District
- 3,000 sqm Johnson Street Park on your doorstep
- Incorporates biophilic design principles and sustainable, future-proof architecture
- 5 Star Green Star sustainability target
- 7.5 Average NatHERS rating



- Features never-to-be-built-out views of Melbourne city and the iconic Yarra River
- Ample community gathering places including a four-storey glass lantern lobby leading to an art-filled walkway decorated by Lalique pieces, curated by renowned artist Damien Hirst



FAREHAM

- 16-level boutique development offering unobstructed, never-to-be-built-out bay views
- Bayside location, 900m from St Kilda beach
- Community-based design with climate-responsive building, communal garden podium, and rooftop garden
- Achieved 8.0 Star Nationwide House Energy Rating (NatHERS)



- Spanish themed executive condominium at Sengkang, Singapore
- Features in-house telehealth kiosk
- 548 units

OUR INTERNATIONAL DEVELOPMENTS



GAMUDA CITY



- From wasteland of untreated sewage to a picturesque parkland of scenic lakes, lush greenery and abundant flora and fauna
- Rejuvenation of 323-ha Yen So Park to create one of Hanoi's biggest community parks
- Well-balanced mix of residential, commercial and recreational amenities



CELADON CITY



- Lush greenery within bustling Ho Chi Minh City
- 16-ha dedicated to Celadon City Central Park – Ho Chi Minh City's largely privately-funded public park
- Homes nestled along the edge of the park with a view of the greenery



THE MEADOW



- A low-rise residential development in Binh Chanh District, the Western corridor of Ho Chi Minh City.
- Comprise 212 townhouses and villas across 12 acres



EATON PARK



A mixed-use development in District 2 of Ho Chi Minh City near the city centre



ARTISAN Park



- Located in Binh Duong within proximity to the upcoming World Trade Center
- Featuring alternating heights, roof and facade design
- Biophilic designs incorporating ample natural light and cross ventilation, linear parks and outdoor communal spaces



SPRINGVILLE



A 45-acre township strategically situated within the growth area of Nhon Trach District, Dong Nai Province, Ho Chi Minh, Vietnam



ELYSIAN



Located next to Saigon High-tech Park and main thoroughfare Belt Road 3 and Long Thanh

* QTP - Quick Turnaround Projects

URBAN TRANSFORMATION



SILICON ISLAND, PENANG

Silicon Island, a 2,300-acre joint venture development with the Penang State Government over the next 15 years, will be a catalyst to realise the State's vision to build an environmentally sustainable high tech industrial hub and world class tourist destination.

Taking the Pearl of the Orient into the Future

Silicon Island is a strategic, transformative development that will redefine the landscape of Penang, rejuvenating the southern coast of Penang Island.

A landmark project of the Gamuda Green Plan 2025, it aims at being climate-resilient with a target of 45 percent carbon emission reduction, earning its status as a Low Carbon City.

This will be achieved through promoting adoption of public transportation with 70:30 public-private transport mode share, over 400 acres green public spaces, 34 percent lower freshwater demand, 63.5 percent reduction in landfill waste and a 100 percent RE-powered industrial zone known as the Green Tech Park.

The Green Tech Park is dedicated to attracting high-value electrical and electronics (E&E) companies that will complement the industrial ecosystem of Bayan Lepas in Penang.

Accredited 5-diamonds in the design category under the Low Carbon City Challenge by Malaysian Green Technology & Climate Change Corporation (MGTC), Silicon Island features super low energy buildings, and green mobility (bicycles and electric public transport over private cars), offering a world class smart and sustainable city that is a great place to live, work and thrive.

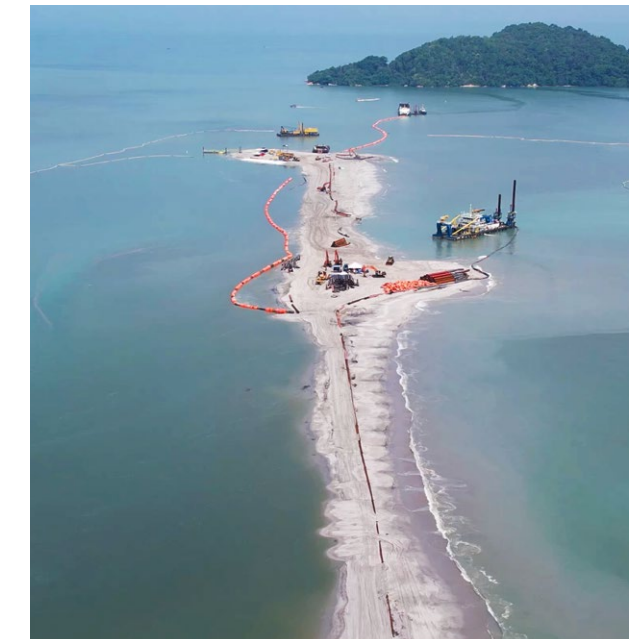
ESG-compliant and in line with Penang2030 vision

Silicon Island is designed to meet global standards and local requirements, aligning itself to the State's Penang2030 vision that is centred around community and sustainability.

- UN Sustainable Development Goals
- Environmental, Social and Governance (ESG) principles
- Intergovernmental Panel for Climate Change (IPCC) to address sea level rising
- Low Carbon Cities Framework by MGTC
- National Physical Planning Council
- Department of Environment Advice on Environment Impact Assessment

Silicon Island will have:

- A 100 percent renewable energy powered Green Tech Park
- 6km Central Canal, 3km of public beaches and 5km of esplanade
- 110km of bicycle and walking tracks island-wide and 6km of a navigational waterway to encourage the use of green mobility, including water transportation
- 17.5 percent of land on Silicon Island reserved for green parks, mangroves, water canals, wetlands, floodplains and bioswales to enhance biodiversity
- Minimum platform level of 3m above mean sea level to accommodate to IPCC's sea level rising prediction and face any joint occurrences of high tides with additional 1,000-year storm surge



QUALITY, SAFETY, HEALTH AND ENVIRONMENT

Health and safety are a top priority in our operations to safeguard all our employees, contractors, customers, suppliers, local communities, and other stakeholders.

Steered by a robust Integrated Management System (IMS), which includes our OSH Management System, we strive to achieve zero fatality through continuous management, monitoring and improvement of the Group's health and safety performance.

We are certified with ISO 9001:2015, ISO 14001:2015 and ISO 45001:2018 with at least 14-year streak of 0 NCR in SIRIM Recertification Audit 2023.

Our robust business continuity and crisis management plan ensures long-term operational resilience and workforce protection through our COVID-19 preparedness, Gamuda Clinic, and Centralised Labour Quarters (CLQ).

Gamuda also benchmarks its OSH performance against best practices in our countries of operation across the region.

Our rigorous engineering and safety measures for the completion of the Guantang Marine Bridge in Taoyuan, Taiwan earned us the Excellent Honour in Construction Golden Safety Award from Taiwan's Ministry of Labour.

Adopting the Australian Workplace Health and Safety (WHS) Standard, Gamuda became the first Malaysian-based company to achieve accreditation from the Office of the Federal Safety Commissioner as a Technically Assured Organisation by Transport for NSW.

Gamuda Australia has also rolled out the Enabling Work programme, placing people at the centre of how we work and giving everyone a voice in how we tackle challenges. Meanwhile, Gamuda Singapore is accredited bizSAFE Star and is certified as a Green and Gracious Builder.

Our consistent excellence beyond international safety standards has resulted in an impressive track record of achieving industry-leading safety performance for underground tunnelling works. Since 2018, we have been recognised for maintaining a Five-Star rating by the prestigious British Safety Council.



- **National Occupational Safety and Health Award, Construction Category - 2022**
National Council for Occupational Safety and Health
- **Five Star Occupational Health And Safety Audit (Five Stars) for MRT Putrajaya Line (Underground) – 2021, 2020, 2019 And 2018**
British Safety Council
- **Sword of Honour Award for Mrt Putrajaya Line – 2022, 2020 and 2019**
British Safety Council
- **Excellent Honour In Construction Golden Safety Award for Guantang Marine Bridge - 2022**
Taiwan's Ministry of Labour



KVMRT SAFETY TRAINING CENTRE

Our KVMRT Safety Training Centre is a testament of the Group's paramount importance to place safety first and elevate the standards of the whole MRT Putrajaya Line project. It was set up as part of the plan to reduce risks and practices that are deemed hazardous to address rising public concerns and scrutiny over the construction industry.

In line with its establishment objective, the KVMRT project, especially the Putrajaya Line, was made an example by the government to set the benchmark for best practices for the construction industry in Malaysia. With increased training and tighter safety strategy, the number of fatalities and injury-related accidents has declined during MRT Putrajaya Line's construction compared with MRT Kajang Line.

The purpose-built construction competency and safety training centre covers OSH training and skills involved in specific high-risk jobs and electrified rail infrastructure construction. Contractors for KVMRT projects must send their workers for safety induction courses.

As a leading construction company, having a safe work environment has contributed to safeguarding project reputation. Our emphasis on safety and health also boosted the morale of our employees, helped us retain our pool of skilled manpower, and contributed towards developing a safe work culture.

- **More than 50,000 workers and employees completed the SHE Passport Scheme**
- **Constant innovation and upskilling its workforce are factors in Gamuda winning the construction industry's Builder of the Year, 2016 award**



GAMUDA PLANT OPERATOR SCHOOL (GPOS)

Gamuda Plant Operator School (GPOS) was established in 1997 to streamline different competency levels of earthmoving plant operations in Malaysia. It remains the only private training academy for crane operators in the country. The school develops plant operators' capabilities in three specific areas: skills competency, safety awareness and youth apprenticeship programmes.

These programmes enable plant operators to obtain Certificates of Competency that are recognised by Government regulatory bodies such as the Department of Occupational Safety and Health (DOSH) and Construction Industry Development Board (CIDB). This is significant as the Malaysian Government only permits Malaysians registered with DOSH to be trained as crane operators.

Since its establishment, GPOS has produced more than 45,000 trainees in crane and earthmoving plant operation, and safety and health programmes. As many as 75 percent of Malaysia's certified crane operators are GPOS trained. GPOS consists of in-house DOSH approved trainers.

- **More than 42,000 trainees to date including subcontractors**
- **Malaysia's only private training academy for crane operators**



TUNNELLING TRAINING ACADEMY (TTA)

Launched in 2011, with an investment of RM10 million, the Gamuda's Tunnelling Training Academy (TTA) is the first academy that develops niche talent for the highly specialised field of tunnel construction. It is the world's first learning institution specialising in TBM technology. The TTA was set up to address the shortage of a competent, local workforce for the tunnelling works. The academy has trained over a thousand tunnel engineers and skilled superintendents.

The establishment of this academy is in line with the Government's aspirations to transform Malaysia into a high-income nation as well as being part of MMC Gamuda's training initiatives to upgrade knowledge, skills, and performance of workers in the local construction industry for future projects.

We have planned to further enhance our TTA courses by collaborating with industry experts Herrenknecht, Bosch Rexroth and Schneider Electric Malaysia to meet local and international tunnelling construction requirements.

- **Trained over 1,500 tunnellers for MRT Kajang and Putrajaya Lines**
- **World's first learning institution specialised in TBM technology**
- **30 percent of our trainees are from Sabah and Sarawak**



TUNNELLING INFRASTRUCTURE ACADEMY (TIA)

Australia's Tunnelling Infrastructure Academy (TIA) was established in 2023. It is located at Rosehill, New South Wales, positioned right next to Sydney Metro's Western Tunnelling Project.

This Academy focuses on training and upskilling our employees and delivery partners using virtual reality equipment, allowing trainees to learn in a safe and controlled environment before applying those skills on the worksite.

Our impact goes beyond our employees, benefiting various communities at large, from Aboriginal and Torres Strait Islanders to women in non-traditional roles, youths, migrants and diverse groups.

As part of the TIA's initiatives, we partnered with Australian social enterprise, Empowered Women in Trades to launch a paid training programme, designed to upskill women who may not have worked within the construction sector previously yet are seeking a career change and are willing to apply transferrable skills to a completely new role.

Participants receive two weeks of paid training, with an option to enrol in the 12-18-month programme Certificate III Civil Construction Apprenticeship at Clyde's Training Facility.

- **An expansion of Gamuda's Tunnelling Training Academy in Malaysia**
- **To date, the TIA has 671 training enrolments for women via onboarding and inductions, traineeships and apprenticeships, and a range of accredited training programmes in tunnelling, civil and Work, Health and Safety (WHS)**



TECHNICAL AND VOCATIONAL EDUCATION AND TRAINING (TVET)

In 2023, with a RM30 million investment, the Group collaborated with private vocational training institution, VTAR Institute, to launch a new technical and vocational education and training (TVET) course for Next-Gen Digital IBS – the first for Malaysia.

The establishment of this programme is in line with the 12th Malaysian National Plan and the Government's vision to develop Malaysia into a fully industrialised country.

The programme aims to provide trainees with cutting-edge construction industry skills and help bolster the competitiveness of local industries on the global stage.

Through TVET, Gamuda is dedicated to nurturing and upskilling local talent and strengthening the delivery of existing upskilling programmes to ensure a sustainable stream of future skilled workers.

- **To train about 600 individuals over the next five years**
- **Collaborated with Merdeka University Berhad by providing full scholarships to two students to study TVET courses in Sichuan, China**



MALAYSIA'S FIRST AI ACADEMY IN THE CONSTRUCTION INDUSTRY



In 2024 we launched the Gamuda AI Academy, offering world-class training, industry-leading technology, and unparalleled mentorship to help participants master full stack AI. Recognising the urgent need for upskilling and reskilling the workforce, the Academy harnesses the power of Google Cloud's platform to quickly build and deploy solutions that infinitely scale, enriched with Gamuda's cutting-edge use cases, such as the award-winning autonomous Tunnel Boring Machine, Building Information Management Augmented Reality (BIMAR), and other innovations.

The Gamuda AI Academy is a culmination of the Group's proven track record in upskilling talent and supply chain. Through our foundation arm, Yayasan Gamuda, the fully sponsored course aims to forge a new generation of skilled professionals and AI innovators with the latest GenAI tools on Google Cloud. With the first cohort intake in September, Gamuda takes another step towards bridging the AI talent gap in line with the national digital transformation roadmap.

The three-month immersive, project-based learning will equip participants with the relevant skills that are highly valued in the tech industry. At the same time, they will earn badges and certifications from Google Cloud that will be a game-changer for their professional profiles. Participants can also benefit from an optional internship leg with Gamuda or its partners to unlock career-defining opportunities, shaping a brighter future for individuals and industries.



BIM ACADEMY

Gamuda's focus on embracing digital construction is further enhanced with the BIM Academy.

With Building Information Modelling (BIM) being an award-winning tool, the BIM Academy trains employees and subcontractors to design and automate our projects using the software.

It sets to pioneer a significant move up the value chain in the local construction sector to develop more skilled talent in the digital engineering ecosystem.

The Academy has trained over 1,000 employees and subcontractors to be able to design and operate this automated process using BIM software for MRT Putrajaya Line.



DIVERSITY AND INCLUSION

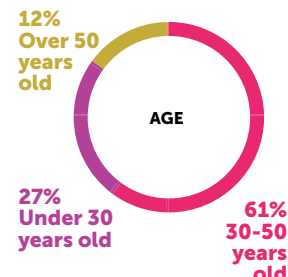
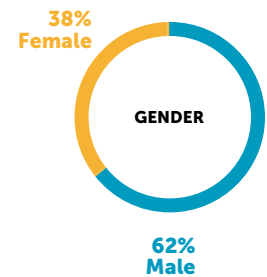
Gamuda employs a diverse workforce to leverage different backgrounds and expertise, generating innovative solutions to stay relevant and competitive in today's global business climate.

We uphold an inclusive workplace culture, ensuring equality and support for all employees, with no discrimination based on race, religion, age, sexual orientation, disabilities, nationality, or other factors in hiring, benefits, appraisal, remuneration, and promotion.

Gender diversity is evident across management levels, with a 30 percent increase in female employees over

three years. Millennials and Generation Y make up 40 percent of our workforce, and we aim to elevate more of them to senior management for long-term growth. We identify and develop high-potential talent through critical roles and succession planning.

We also promote an equitable and inclusive workplace for people with disabilities, including employees on the autism spectrum from our Enabling Academy.



- Total number of employees: 4,219
- 57 percent of women on Gamuda's Board



SOCIAL AND COMMUNITY PARTNERSHIP



Yayasan Gamuda was established in 2016 to oversee the Group's charity efforts while ensuring that they align with Gamuda's objectives for people development and community investment.

The Group allocates about two percent of its profits annually to Yayasan Gamuda.

Yayasan Gamuda conducts three anchor programmes:

- Enabling Academy
- Gamuda Scholarship
- Gamuda Inspiration Award



ENABLING ACADEMY



GAMUDA SCHOLARSHIP



GAMUDA INSPIRATION AWARD

SOCIAL AND COMMUNITY PARTNERSHIP



In 2017, Gamuda established the Enabling Academy (EA) to empower young adults on the autism spectrum to be gainfully employed. Gamuda remains the first corporate company to operate such Employment Transition Programme (ETP) in Malaysia.

The ETP Trainer's Manual produced by the academy has been recognised by the Malaysian Ministries of Education, Youth and Sports as a leading guide for teachers and practitioners. The manual is available in English, Chinese and Bahasa Malaysia.

Going further, the EA has made its training resources and materials available in the public domain without charges. The sharing of the intellectual property is intended to help develop more trainers and teachers in this niche field in Malaysia.

We advocate for collaboration with partner companies that embrace neurodiversity to build an impactful ecosystem with support networks to encourage sustainable employment opportunities for people with autism.

- **More than 200 companies over 10 types of industries including banking, programming, accounting, oil and gas, legal, hospitality, retail, pharmaceutical, manufacturing, property and construction and more**
- **81 percent graduates secured and sustained jobs at partner companies for at least a year**
- **First corporate company in Malaysia to establish and operate an ETP**
- **First in Malaysia to publish an ETP Trainer's Manual**
- **118 graduates over 13 batches as of June 2024**



GAMUDA SCHOLARSHIP

The Gamuda Scholarship, established in 1996, reflects our social (ESG) effort and commitment to preparing youth as future leaders. It provides educational support for young Malaysians to pursue university education and successful careers, contributing to community development.

Our 5-year plan includes upgrading the scholarship program, with a record RM30 million offered in 2024. We

are focusing on students from low-income families and increasing allocations for overseas studies in countries where we operate, such as Vietnam, Taiwan, and Australia. This effort includes an enhanced selection process and broader outreach.



- **Total investment of RM30 million in 2024 to 123 students**
- **More than 70% of FY2024 scholars come from B40 families**
- **21 scholars from Malaysia's Indigenous community - five Orang Asli from West Malaysia, 12 Orang Asal from Sabah, and four from Sarawak**
- **Our scholars are placed in local and overseas universities, including Ivy League placements**



MALAYSIA

Supported more than 763 students, with a total scholarship sum exceeding RM114 million.



AUSTRALIA

17 Indigenous youth to receive university and trade scholarships committed through the NRL School to Work Programme in 2024 by Gamuda Australia.



VIETNAM

15 scholarships offered by Gamuda Land Vietnam in 2023 and 2024.

100 University of Social Sciences and Humanities students received one-off financial assistance by Gamuda Land Vietnam.

SOCIAL AND COMMUNITY PARTNERSHIP

EMPOWERING SOCIAL WORK

The Star Golden Hearts Award (SGHA) and Gamuda Inspiration Award (GIA) have been longstanding joint initiatives between The Star Foundation and Yayasan Gamuda, with a history of partnership since 2016. These awards hold significant recognition for humanitarian and social contributions in Malaysia.

Starting from 2024, Yayasan Gamuda has taken the lead in administering the GIA independently, marking a new chapter in our commitment to social impact and community development.

This award recognises individuals or groups for their outstanding service and contribution to society. In particular, **community work related to employment, entrepreneurship, youth empowerment, digital literacy, waste management, nature conservation, urban agriculture, ecotourism, community welfare, disabled with special needs, water and sanitation in rural and indigenous communities, and animal welfare.**



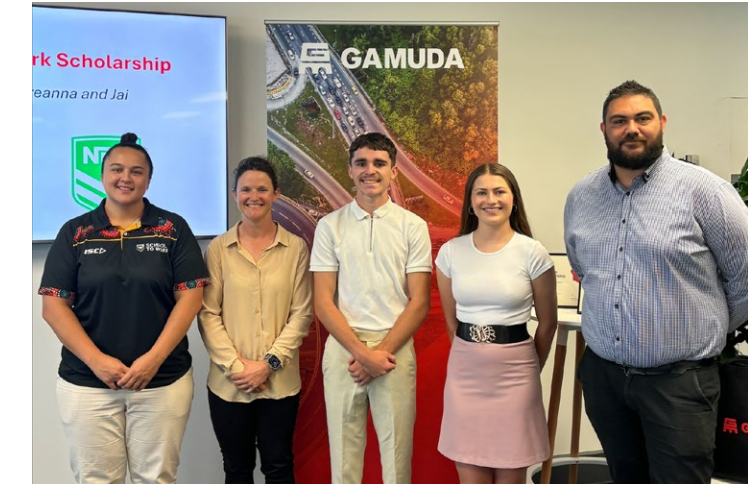
POSITIVE SOCIAL IMPACT IN AUSTRALIA

Gamuda Australia's partnership with the NRL School to Work Program reflects an investment to enable more Indigenous youth to transition into further education, training, and meaningful employment.

In 2024, 17 university and trade scholarships are committed towards alleviating initial financial barriers associated with educational and vocational pursuits, covering expenses such as tuition fees, tools, personal protective equipment, uniforms, and transportation.

As a part of their scholarship recipients will also be able to complete a paid internship with Gamuda Australia to enhance their field experience while they study.

This underscores our commitment to nurturing young talent and fostering inclusivity within the construction sector.



GAMUDA AUSTRALIA GRADUATE PROGRAMME

Gamuda Australia's graduates of 2023 participated in a unique social impact project, where they designed, built, and installed habitats for local wildlife to help regenerate local flora and fauna in the Agnes Banks bushlands in Western Sydney.

They teamed up with the Deerubbin Local Aboriginal Land Council (LALC) to create:

- 10 bee hotels to attract native bees, which will pollinate the threatened native fauna species throughout the area
- 10 bird boxes for kookaburras to use as nests to rejuvenate the native bird population
- 10 special PVC cockatoo bird boxes to attract them back to the area to rejuvenate the native flora and fauna.

The team also donated and planted 400 native seedlings to regenerate bushland.

Gamuda Australia's Graduate Programme enables students to develop the skills needed to launch their career, while the social impact project has helped them discover their purpose in work by channelling their engineering capabilities towards creating a positive impact on the environment.

The project also plays an important role in Gamuda's reconciliation journey, which aligns with our Reconciliation Action Plan and Seeds for Growth sustainability framework.



PARTNERSHIP WITH MAJOR PROJECTS GROUP

In 2024, Gamuda partnered with Major Projects Group (a demolition company and certified social enterprise), dedicating 50 percent of all profits to charity via their Major Projects Foundation.

The Foundation focuses on safeguarding and revitalising Australian coastal and Pacific Islands waters. This includes undertaking critical research into the M/V Limerick wreck, which lies off the coast of Ballina, New South Wales. The vessel poses an environmental hazard, frequently leaking fuel into the surrounding ecosystem, with recorded slicks extending up to 10km.

The partnership is part of Gamuda's Collaborating for Change initiative – one of the pillars of our "Seeds for Growth" sustainability framework.



INDIGENOUS PARTNERSHIPS

Gamuda is committed to respecting the rights of Indigenous groups according to the United Nations Declaration on the Rights of Indigenous Peoples, and always seek their free, prior, and informed consent (FPIC) in any decisions that may affect them.

Our programmes on uplifting Indigenous peoples in Malaysia and Australia are focused on benefit sharing and cultural preservation, which has enabled us to develop lasting relationships built on mutual respect and trust.

ORANG ASLI IN MALAYSIA

We provide access to employment and income opportunities to the Orang Asli in Malaysia. Our Orang Asli employees make up 5.3 percent of our workforce.

In other ways of supporting them with sustainable income opportunities, we provide knowledge transfer sessions and cultural showcases, where they sell traditional handicraft, and conduct cooking demos, weaving workshops, and cultural performances at the Wetlands Arboretum Centre in Gamuda Cove.

Recognising their deep connection with nature, we work alongside them to manage natural resources sustainably.

Besides Gamuda Scholarship, Yayasan Gamuda offers its Strengths-Based Education programme for students and out-of-school children and youth at Community Learning Centres.

In addition, we have published a storybook, titled, 'Stories from the Orang Asli Communities' by Orang Asli writers to conserve the oral wisdom of the community.



ABORIGINAL AND TORRES STRAIT ISLANDERS IN AUSTRALIA

Our Reflect Reconciliation Action Plan (RAP) seeks to deepen engagement with Indigenous communities as we grow our business in Australia.

We have improved employment outcomes by increasing Aboriginal and Torres Strait Islander recruitment, retention and professional development. They currently make up 2.5 percent of our Australian workforce.

We have increased supplier diversity to improve economic and social outcomes, investing over AU\$60 million in 51 Aboriginal businesses. Gamuda is a member of Supply Nation, NSW Indigenous Chamber of Commerce, Kinaway Indigenous Chamber of Commerce, and Yarpa Hub.

Meanwhile, in our project delivery, our stakeholder advocacy and outreach programmes include Aboriginal and Torres Strait Islander groups.

Our social programmes include cultural events and education – for example, we observe cultural protocols, awareness and sensitivity training, as well as celebrate National Reconciliation Week and NAIDOC Week.

LIST OF PROJECTS

ENGINEERING AND CONSTRUCTION

PROJECT	CLIENT	DURATION	SCOPE OF WORKS
Boulder Creek Wind Farm Aula Energy and CS Energy	Aula Energy and CS Energy	2024 - 2027	<ul style="list-style-type: none"> 38 turbines, with a generating capacity of 228 MW (6 MW per turbine) Civil and electrical works to construct 41km of access tracks with grades up to 15% and 70,000 m3 of cut/fill bulk earthworks
Metronet High-Capacity Signalling Project	Public Transport Authority (PTA) of Western Australia	2024 - 2034	<ul style="list-style-type: none"> Design, supply, test, commission and maintain the Urbalis Communications-based Train Control Upgrading the existing signalling and control systems to an integrated Communications-Based train Control System Deliver in multiple line-by-line stages to minimise disruption to train operators.
West Coast Station and Tunnels, MRT Cross Island Line (Phase 2), Singapore	Singapore Land Transport Authority	2023 - 2032	<ul style="list-style-type: none"> One underground station Twin tunnels, at approximately 1.9 km
Kaohsiung MRT Metropolitan Yellow Line Package YC01, Taiwan	Taiwan Kaohsiung City Government's Mass Rapid Transit Bureau	2023 - 2032	<ul style="list-style-type: none"> 4.4km alignment located within NiaoSong District of which 3.5km comprises underground twin bored tunnels and 0.9km of elevated tracks Four stations (three underground and one above ground) Two crossovers and cross passages
M1 Motorway Extension to Raymond Terrace: Black Hill to Tomago Works	Transport for NSW, Australia	2023 - 2028	<ul style="list-style-type: none"> 10km greenfield dual carriageway motorway link between the M1 Motorway at Beresfield and Tomago Major interchanges at Black Hill, Tarro and Tomago Nine bridges, including a viaduct, approximately 2.6km-long across the Hunter River and floodplain
Ulu Padas Hydroelectric Dam, Sabah, Malaysia	Sabah State Government	2023 - 2029	<ul style="list-style-type: none"> 187.5 megawatts
NEDA39 Solar Farm, Pahang, Malaysia	N/A	2022 - 2023	<ul style="list-style-type: none"> 125-acre and 39MWp solar farm
TaoYuan City Underground Railway Project, Package CJ18, PingZhen Commuter Station	Taiwan Ministry of Transportation and Communications' Railway Bureau	2022 - 2030	<ul style="list-style-type: none"> 3.734km underground twin bound railway track 1 underground commuter station ZhongFeng bridge protection works Relocation of LaoJie river bridge Temporary PingZhen above-ground commuter station
Defu Station and Tunnels, MRT Cross Island Line (Phase 1), Singapore	Singapore Land Transport Authority	2022 - 2030	<ul style="list-style-type: none"> 1 underground station 1.4km twin tunnels 2-storey electrical substation New vehicular bridge Road and canal widening
Coffs Harbour Bypass, Australia	Transport for NSW, Australia	2022 - 2027	<ul style="list-style-type: none"> 14km of new, upgraded 4-lane 3 tunnels (1km in total) 3 grade-separated interchanges Bus interchange, pedestrian footbridge

PROJECT	CLIENT	DURATION	SCOPE OF WORKS
Sydney Metro West - Western Tunnelling Package, Australia	Transport for NSW, Australia	2022 - 2025	<ul style="list-style-type: none"> 9km twin metro rail tunnel Excavation & civil works for 2 stations Earthworks Civil structures, utilities and connecting tunnels for Maintenance and Stabling Facility Precast segment manufacturing facility TBM operations site
Sungai Rasau Water Supply Scheme (Stage 1), Malaysia	Selangor State Government	2022 - 2025	<ul style="list-style-type: none"> 1400 mld intake structure capacity 700 mld water treatment plant 2.4m diameter twin-pipe 2 overhead bridges crossing 2 highways
Marine Bridge – Guantang, Taiwan	CPC Corporation Taiwan	2019 - 2022	<ul style="list-style-type: none"> 1.23km marine bridge 284m road embankment
Extension of Marine Bridge, Taiwan	CPC Corporation Taiwan	2022 - 2024	<ul style="list-style-type: none"> Extension of marine bridge by 376m
161kV Songshu to Guangfeng Underground Transmission Line, Taiwan	Taiwan Power Company	2021 - 2025	<ul style="list-style-type: none"> 7.3km underground cable tunnel 13 units manholes 4 units working shafts Foundation for primary substation distribution transformer
Gurney Marine Bridge, Penang, Malaysia	Messrs Tanjung Pinang Development Sdn. Bhd.	2021 - 2024	<ul style="list-style-type: none"> 730m in total length 450m marine bridge crossing
Second Trunk Road, Batang Lupar Bridge No. 2	Jabatan Kerja Raya Sarawak	2020 - 2025	<ul style="list-style-type: none"> 870m cable-stayed bridge, comprising two 145.5m towers and three spans, measuring 210m, 450m, and 210m, across the existing Batang Lupar River 2.1km of approach road
Seawall – Taipei Port, Taiwan	Taiwan International Ports Corporation Ltd.	2020 - 2025	<ul style="list-style-type: none"> 4km seawall Shore protection works Dismantle existing 945m of seawall structures
Gali Batu Bus Depot, Singapore	Singapore Land Transport Authority	2019 - 2023	<ul style="list-style-type: none"> 5-storey main depot with parking capacity for 680 buses and associated facilities 5-storey dormitory for 350 pax 3-storey administrative building
PMV Infra 05 – Belfield Tunnel, Malaysia	PNB Merdeka Ventures, Malaysia	2019 - 2023	<ul style="list-style-type: none"> 1.1km road tunnel 80m flyover bridge 100m road embankment
Pan Borneo Highway (WPC-04), Sarawak, Malaysia	Ministry of Works, Malaysia	2016 - 2022	<ul style="list-style-type: none"> 89.4km highway 9 river bridges 189 crossing culverts A new interchange 49 bus shelters 3 pedestrian bridges
MRT Putrajaya Line, Malaysia	Mass Rapid Transit Corporation, Malaysia	2015 - 2023	<ul style="list-style-type: none"> Total 56.2km (36 operational and 5 provisional stations) 42.7km elevated; 13.5km underground

LIST OF PROJECTS

ENGINEERING AND CONSTRUCTION

PROJECT	CLIENT	DURATION	SCOPE OF WORKS
Yen So Park Urban Renewal Project, Vietnam	Hanoi People's Committee, Vietnam	2009 - 2012	<ul style="list-style-type: none"> 200mld Serves 900,000 people
Electrified Double Track Project (Ipoh – Padang Besar), Malaysia	Ministry of Transport, Malaysia	2008 - 2014	<ul style="list-style-type: none"> 329km rail upgrade to two parallel tracks Rail electrification and signalling 65 road over bridges 78 river bridges 9 road under bridges 48 motorcycle/pedestrian bridges A 282m swing bridge 3.45km marine viaduct 29km land viaduct 2 mined tunnels (3.3km & 350m) 15 stations 10 halts 7 operation buildings 4 centralised traffic control buildings 3 depots
Sitra Causeway Bridges, Bahrain	Ministry of Works & Housing, Bahrain	2006 - 2010	<ul style="list-style-type: none"> 3.5km highway Two marine bridges (200m & 400m) 2.4m road embankments A new three-level interchange
Dukhan Highway (Shahaniya to Zek reet), Qatar	Public Works Authority of Qatar	2005 - 2009	<ul style="list-style-type: none"> 42.5km highway 5 grade separated interchanges 7 camel underpasses
Stormwater Management and Road Tunnel (SMART), Malaysia	Department of Irrigation & Drainage Malaysia; Malaysian Highway Authority	2003 - 2007	<ul style="list-style-type: none"> 9.7km stormwater tunnel 3km double-deck motorway 3 billion litres of storage capacity 2 ventilation shafts 2 junction boxes
Kaohsiung Mass Rapid Transit (MRT) Metropolitan Orange Line Package C04	Kaohsiung Rapid Transit Corporation Taiwan	2002 - 2008	<ul style="list-style-type: none"> 3.9km bored tunnel 1km cut and cover tunnel 2 underground stations
Panagarh-Palsit Highway & Durgapur Expressway, India	National Highway Authority of India	2001 - 2005	<ul style="list-style-type: none"> 128km (64km + 64km) road upgrade 25 (10 + 15) underpasses 4 (2 + 2) overpasses

PROPERTY DEVELOPMENT

DEVELOPMENTS (MALAYSIA)	SIZE (ACRE)
Gamuda Cove, Malaysia	1,530
Gamuda Gardens, Malaysia	810
Gardens Park, Malaysia	532
twentyfive7, Malaysia	257
Kota Kemuning, Malaysia	1,854
Jade Hills, Malaysia	338
Valencia, Malaysia	278
Bandar Botanic, Malaysia	1,242
Kundang Estates, Malaysia	89
Horizon Hills, Malaysia	1,228
HighPark Suites, Malaysia	4.9
The Robertson, Malaysia	3
Madge Mansions, Malaysia	2.2
Bukit Bantayan Residences, Malaysia	18
GM Residence Remia, Malaysia	34
Gamuda Biz Suites, Malaysia	3.6
Aldgate, United Kingdom	0.12
West Hampstead Central, United Kingdom	1.70
75 London Wall, United Kingdom	7.3
661 Chapel St., Australia	0.35
The Canopy on Normanby, Australia	0.64
Fareham, Australia	0.24
GEM Residences, Singapore	3.0
OLÁ, Singapore	12.7
Celadon City, Vietnam	203
Gamuda City, Vietnam	426
Artisan Park, Vietnam	13.8
Elysian, Vietnam	6.9
Eaton Park, Vietnam	9.1
Springville, Vietnam	45
The Meadow, Vietnam	12

INFRASTRUCTURE CONCESSIONS

PROJECT	CLIENT	DURATION	SCOPE OF WORKS
Stormwater Management and Road Tunnel (SMART), Malaysia	Department of Irrigation & Drainage Malaysia; Malaysian Highway Authority	2003 - 2007	<ul style="list-style-type: none"> 9.7km stormwater tunnel 3km double-deck motorway 3 billion litres of storage capacity 2 ventilation shafts 2 junction boxes
Sungai Selangor Dam Water Supply Scheme	Selangor State Government	2000 - 2005	<ul style="list-style-type: none"> 110m rock - filled regulating dam with crest length of 800m and storage capacity of 235 million cubic meters 375m diversion tunnel 2 water treatment plants - Rasa (250 mld) and Bukit Badong (800 mld) 2,000 mld/day water supply
Western Kuala Lumpur Traffic Dispersal Scheme – SPRINT Highway	Ministry of Works Malaysia	1999 - 2004	<ul style="list-style-type: none"> 26.5km, dual 3-lane highway 15 interchanges, 3 toll plazas 700m twin bored tunnel 2km elevated double decker viaduct 43 bridges 1 vehicular underpass 10 pedestrian bridges
Lebuhraya Damansara Puchong (LDP)	Ministry of Works Malaysia	1996 - 1998	<ul style="list-style-type: none"> 40km, dual 3-lane highway 19 interchanges, 4 toll plazas 1.1km cable-stayed bridge (three-level overpass)
Shah Alam Expressway	Ministry of Works Malaysia	1994 - 1996	<ul style="list-style-type: none"> 34.5km, dual 3-lane highway 12 interchanges, 3 toll plazas

SIGNIFICANT RECOGNITION & AWARDS



- **Company of the Year**
- **Big Cap Companies – RM10b to RM40b Market Capitalisation:**
Highest Growth in Profit After Tax Over Three Years
- **Construction:**
Highest Growth in Profit After Tax Over Three Years
- **Best Corporate Responsibility Initiatives:**
Big Cap Companies RM10b to RM40b Market Capitalisation



Gamuda Berhad 197601003632 (29579-T)

Menara Gamuda, Block D, PJ Trade Centre

No. 8, Jalan PJU 8/8A, Bandar Damansara Perdana

47820 Petaling Jaya


Selangor Darul Ehsan, Malaysia

☎ (603) 7491 8288 📠 (603) 7728 9811 ✉ gcc@gamuda.com.my 🌐 gamuda.com.my

 GamudaBhd

 GamudaBhd

 GAMUDA

 gamudagroup

 Gamuda Berhad

Digital: 8 October 2024