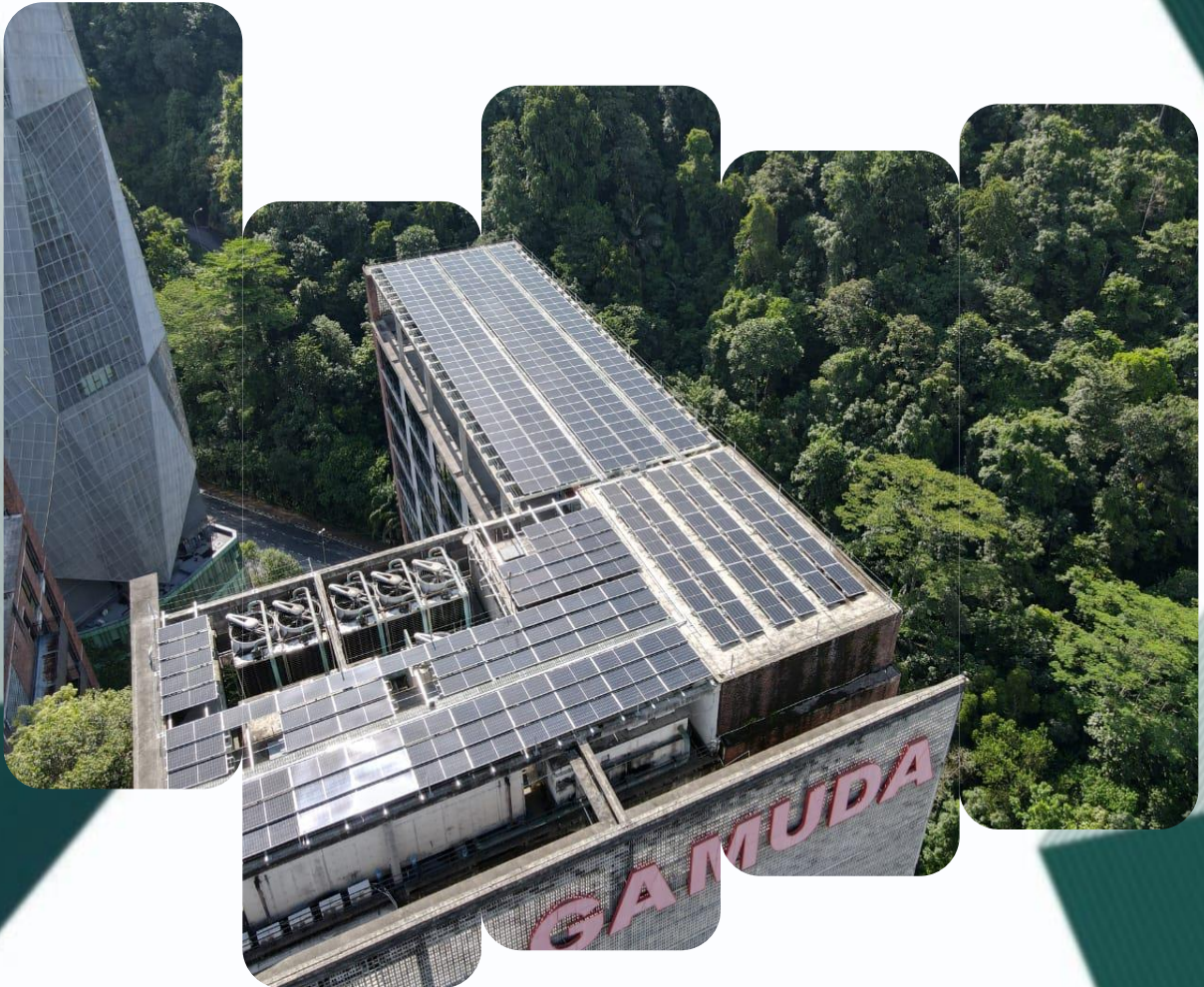
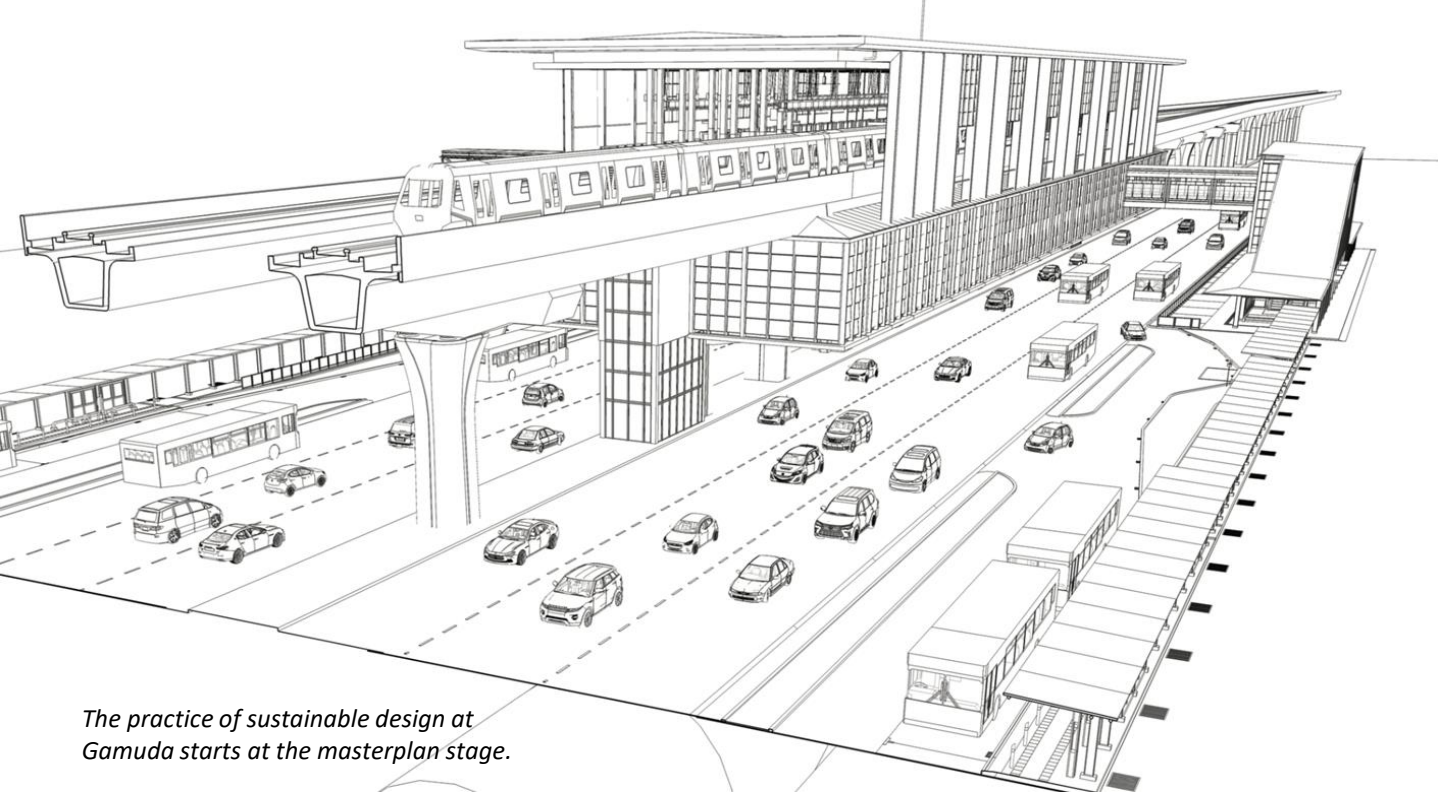


GAMUDA ESG BULLETIN



GAMUDA ESG SNAPSHOT



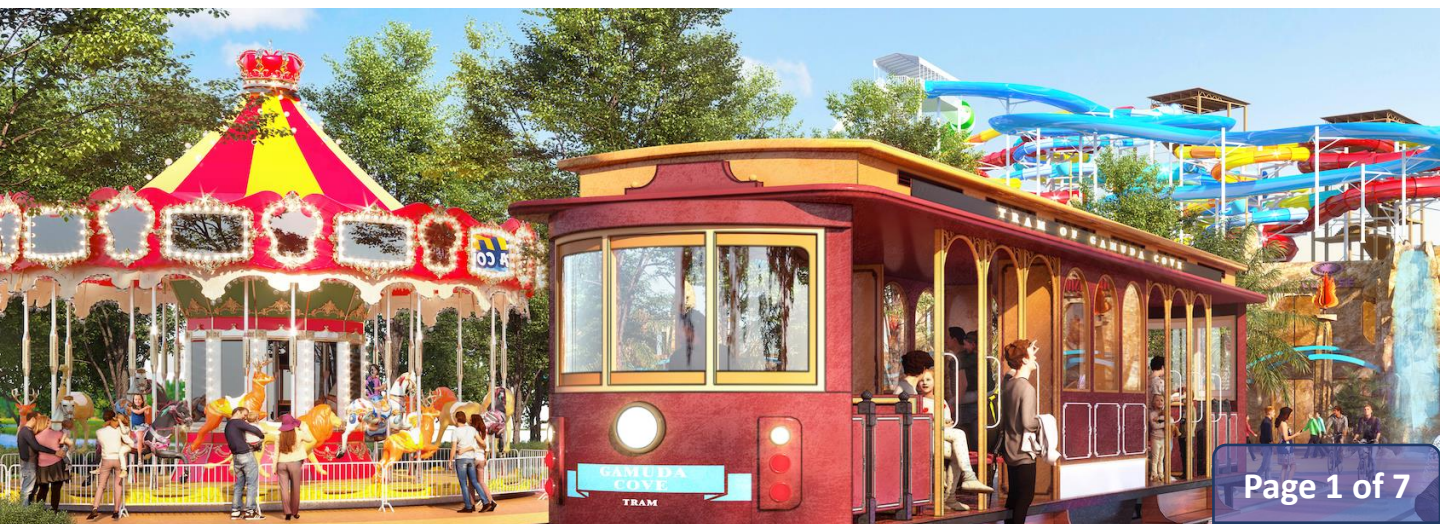
The practice of sustainable design at Gamuda starts at the masterplan stage.

CONNECTING PEOPLE WITH SUSTAINABLE DESIGN & DEVELOPMENT

The key considerations when building architecture are the provisions of water and energy savings, better connectivity and accessibility to public transport in all our townships, and others.

Thus, mapping the route and setting the facilities that promote the use of public transportation is imperative during the design and development stages.

At all of our township, public transport such as trams, buses and electric buggy shuttle service are provided.





Gamuda's Human Rights Policy commits all levels of business to advocate diversity and inclusion.

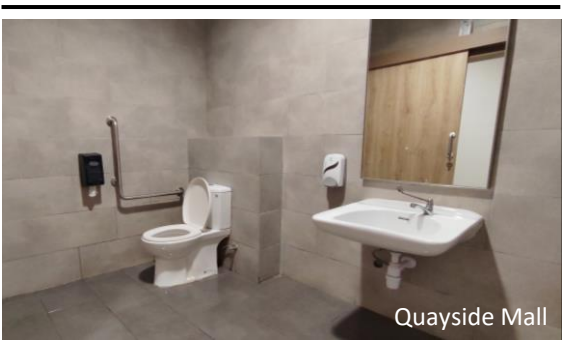
DID YOU KNOW?

FY2022

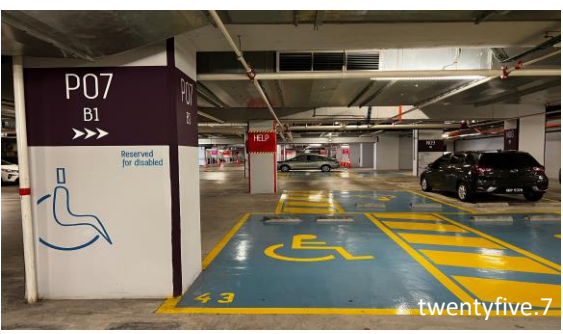
- ✓ Gamuda has conducted assessments to verify human rights risks and impacts by engaging business partners, vendors and contractors.
- ✓ There were zero reported incidents or issues pertaining to violations of human rights that includes zero incidents of discrimination.

SHARE OUR SIMILARITIES, CELEBRATE OUR DIFFERENCES

Support bar in the accessible toilet



Parking for disabled persons at all our premises and buildings



Elevator button with the braille feature and positioned at waist-level



Tactile paving on facilities that we build such as train stations



Specifically, for the inclusion of disabled persons, we ensure to accommodate an environment that facilitates and eases their mobility.

We ensure to equip all our premises and buildings with disabled-friendly access such as wheelchair ramps, dedicated parking, tactile paving, and others.

Corporate Investments via GL Cares



Approximately
RM 110, 206
contributed
through GL Cares

FLOOD RELIEF

- 6,000 meals distributed across 4 locations
- Zipped wardrobes donated to 80 *Orang Asli* families
- Volunteers from Gamuda Cove helped to clean up 30 homes



COVID-19 Assistance

- Collaborated with suppliers such as 99 Speedmart to stock up food & essentials aid stations (eg. rice, cooking oil, face masks, sanitisers, diaper)
- Bag filled with essentials distributed to villagers and Centralised Labour Quarters (CLQs)
- Delivered food to over 1,700 workers in CLQs



WASTE NOT, WANT NOT



*“Refuse what you do not need;
Reduce what you do need;
Reuse what you consume;
Recycle what you cannot refuse,
reduce, or reuse, and rot (compost)
the rest.” - Bea Johnson*

100 % of Gamuda sites have been certified ISO 14001:2015 certification focuses on Environmental Management.

With this certification, we commit to avoid pollution, as we can revise utilizing and repurposing our resources in our efforts to reduce waste.



E-waste bin located at B5 car park area of Menara Gamuda

GAMUDA'S INITIATIVE

- 1 Segregation of waste
- 2 E- waste collection throughout the year
- 3 All sites recognised ISO 14001
- 4 Dedicated storage for hazardous & recycle waste

We target to have at least 25% of identified sites' food waste generated diverted away from landfill to form compost. As we strive to establish processes and monitor the reduction, we have taken the initiative to focus on reduction for each type of waste.

For example, for food waste management, the total food waste collected and composted increased by 88% compared to FY2021.

UNDER THE BRIDGE: WATER SECURITY



“When the well’s dry, we know the worth of water.” – Benjamin Franklin”

What is Water-Stressed/scarce?
Water scarcity happens when the need for water by communities is not fulfilled due to insufficient supplies and inadequate infrastructure.

Climate change will likely affect the weather patterns that lead to unpredictable and extreme weather events such as floods and droughts.

ALL of Gamuda’s active operations, sites and premises are NOT located within water-stressed region or area.

Source: Aqueduct Water Risk Atlas from World Resources Institute

As most of our project sites' commissioning date varies, the time-specific target baseline to reduce water consumption will be at the commencement year of the project.

The Group targets to have 50% of the water used for construction sourced from recycled water by 2025 as part of our effort to reduce our dependency on portable water.

GAMUDA'S ON-GOING INITIATIVES

Digitalising water consumption data for systematic monitoring

Enhancing employees' awareness on proper water management

Reduce wastage by preventing leaks

Optimising surface water (e.g. lakes) for landscape irrigation

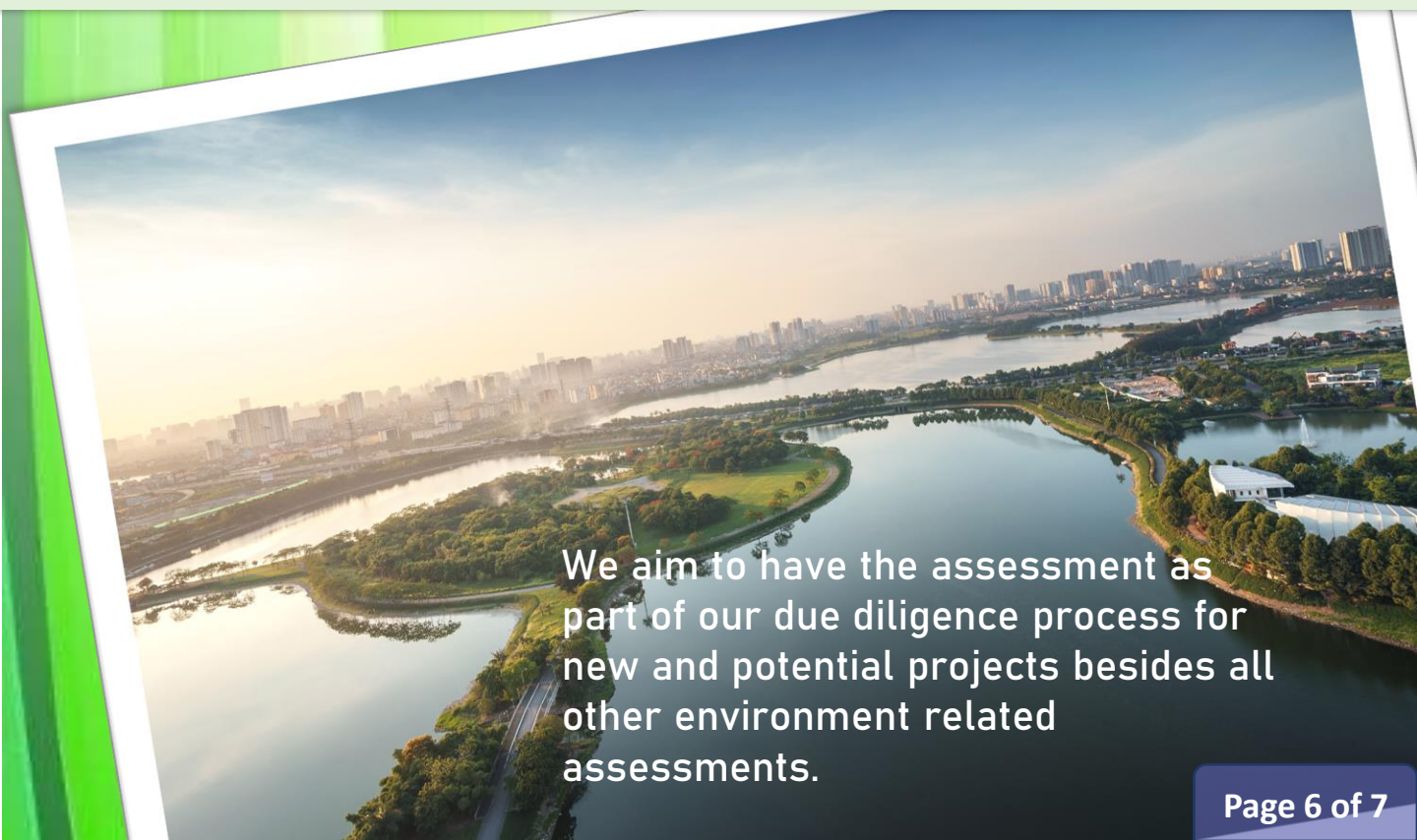
OUR TAKE ON BIODIVERSITY

Malaysia is widely recognised as one of the world's biodiversity hotspots. Gamuda is committed to carrying out our developments in a manner that is sensitive to the ecosystem, and have made it one of our missions to protect local biodiversity by ensuring reduced loss of biodiversity in all the areas where we have projects.

We preserve the trees that were there before us, with a focus on 70% native species across our developments, towards creating urban forests which reduce ambient temperatures, enhance liveability and sequester carbon.



Our biodiversity assessment shows that our bio-restoration effort continues to provide a conducive environment for a number of IUCN Red List species and national conservation list of species with habitats in the affected areas by our operations.

A large aerial photograph showing a wide expanse of water, likely a reservoir or a large canal, with a city skyline visible in the background. The water is surrounded by greenery and some buildings. The sky is clear and blue.

We aim to have the assessment as part of our due diligence process for new and potential projects besides all other environment related assessments.

ENSURING

GOVERNANCE at all levels

- Gamuda's Whistleblower Policy and mechanism are available for the reporting of irregularities within the Group's operations.
- Whistleblowing reports are directed to the Chief Integrity and Governance Officer (CIGO) via e-mail at admin.igu@gamuda.com.my
- Upon receiving a report, the CIGO will review and evaluate the disclosure and decide on the next course of action.

95% of Gamuda employees were briefed on anti-bribery and corruption matters

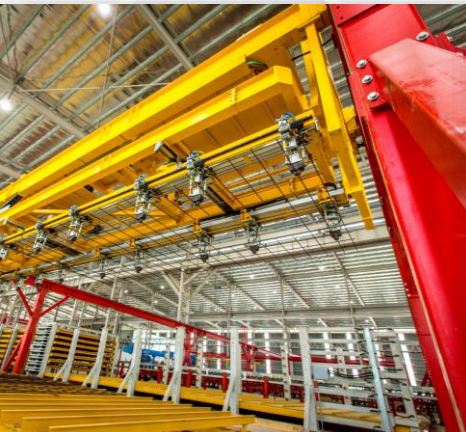
3,698 employees briefed out of 3,895

The five percent difference is due to employee movement

FY2022

Zero proven grievance, bribery, corruption or disciplinary/dismissal reported cases

Zero fine, penalties or settlement in relation to corruption





© COPYRIGHT

All rights reserved